

Initial report to the GwE Joint Committee on the region's performance

September 2016

INITIAL REPORT ON THE PERFORMANCE OF SCHOOLS IN THE GWE REGION [SEPTEMBER 2016]

CONTENT

Introduction	3
Context	3
Table 1: % pupils of statutory school age entitled to free school meals [FSM]	3
Table 2: % SEN provision learners [2015-16 figures]	3
Table 3: proportion of learners receiving education other than at school – rate per 1,000 learner [2015-16 figures]	4
Table 4: % learners achieving in the Foundation Phase Indicator [FPI]	4
Table 5: % learners achieving in the Core Subject indicator [CSI] at key stage 2 [KS2]	5
Table 6: : % learners achieving in the Core Subject indicator [CSI] at key stage 3 [KS3]	5
Table 7: % learners achieving in the Level 2 Inclusive Threshold [L2+]	6
Table 8: summary of the authorities’ rankings in the main indicator for each key stage	6
Foundation Phase – main messages	7
Foundation Phase – aspects that require attention	7
Table 9: Foundation Phase – expected outcome	8
Table 10: Foundation Phase – expected outcome +1 (higher)	10
Table 11: Foundation Phase – performance against targets and projections	12
Table 12: Foundation Phase – performance of FSM learners	14
Table 13: Foundation Phase – difference between the genders	17
Key Stage 2 – main messages	20
Key Stage 2 – aspects that require attention	20
Table 14: Key Stage 2 – expected level	21
Table 15: Key Stage 2 – expected level +1 (higher)	23
Table 16: Key Stage 2 – performance against targets and projections	25
Table 17: Key Stage 2 – performance of FSM learners	27
Table 18: Key Stage 2 – difference between the genders	30
Key Stage 3 – main messages	33
Key Stage 3 – aspects that require attention	33
Table 19: Key Stage 3 – expected level	34
Table 20: Key Stage 3 - expected level +1 (higher)	36
Table 21: Key Stage 3 – performance against targets and projections	38
Table 22: Key Stage 3 – performance of FSM learners	40
Table 23: Key Stage 3 – difference between the genders	43
Key Stage 4 – main messages	46
Key Stage 4 – aspects that require attention	46
Table 24: Key Stage 4 – Level 2 Inclusive Threshold	48
Table 25: Key Stage 4 – Level 2 Threshold	48
Table 26: Key Stage 4 – Level 1 Threshold	49
Table 27: Key Stage 4 - CSI	49
Table 28: Key Stage 4 – Capped Points Score (CPS)	50
Table 29: Key Stage 4 – 5 A*-A (higher grades)	50
Table 30: Key Stage 4 – Welsh	51
Table 31: Key Stage 4 – English	51
Table 32: Key Stage 4 – Maths	52
Table 33: Key Stage 4 – Science	52
Table 34: Key Stage 4 – performance against final projections	53
Key Stage 5	54
Table 35: Key Stage 5 – A Level	54

INITIAL REPORT ON THE PERFORMANCE OF SCHOOLS IN THE GWE REGION [SEPTEMBER 2016]

Introduction

The main purpose of the report is to present early information on end of key stage performance for the 2015/2016 academic year. We emphasise that only initial information on KS4 results is shared and that, so far, comparative and benchmark data cannot be accessed for any of the key stages. Due care is required when considering the information since neither the analysis nor the comparisons will be completed on national level until the turn of the year.

However, gaining early access to the kind of information contained in the report, and the opportunity to pose further questions, is an important contribution to the self-evaluation process and in responding to questions such as those listed below:

- How does the region's performance compare with the 2015 performance?
- How does the region's performance compare with the targets set for 2016?
- How have the 6 authorities performed?
- Are performances across the core subjects similar?
- Which aspects require improvements?

Context

Table 1 shows the % of pupils of statutory school age entitled to free school meals over the last five years in comparison to Wales and the individual authorities.

Table 1: % pupils of statutory school age entitled to free school meals [FSM]

	2013		2014		2015		2016	
	%	Safle/Rank	%	S/R	%	S/R	%	S/R
Anglesey	20.5	13	18.5	11	17.4	11	17.0	10
Gwynedd	13.7	5	12.9	4	13.3	4	13.0	4
Conwy	18.3	9	18.1	10	17.1	9	16.2	8
Denbighshire	19.1	11	19.4	13	19.0	13	19.1	14
Flintshire	13.5	4	13.9	5	14.9	6	15.0	6
Wrexham	18.1	8	18.0	9	16.6	8	16.4	9
GwE	16.7	1	16.4	1	16.1	1	15.9	1
Wales	19.5		19.1		18.8			

The ranking indicates the authorities' positions in comparison to the Welsh authorities, with the highest ranking indicating the smallest cohort of 5-15 year old pupils receiving FSM. The region's FSM % is the lowest out of the 4 consortia. The Table suggests that, providing that the right to free school meals is an appropriate measure of deprivation, Anglesey's performance in 2016, for instance, should be around tenth of all of the Welsh authorities, i.e. corresponding to the free school meal ranking.

Table 2: % SEN provision learners [2015-16 figures]

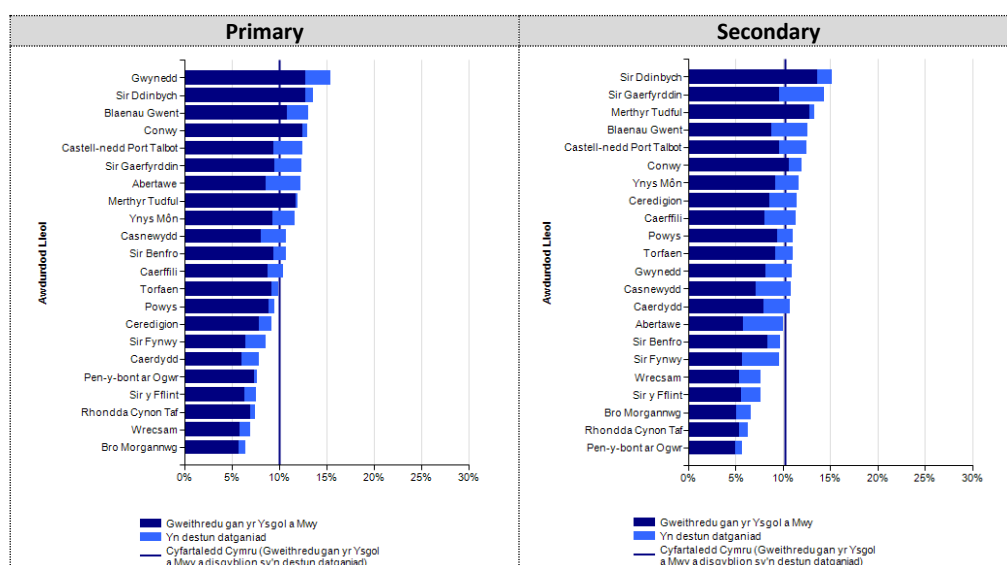


Table 2 shows the percentage of SEN provision pupils in the local authorities. The highest percentage is in Gwynedd with the lowest percentage in Wrexham. In the secondary sector, the highest percentage is in Denbighshire with the lowest percentage in Flintshire.

Table 3: proportion of learners receiving education other than at school – rate per 1,000 learners [2015-16 figures]

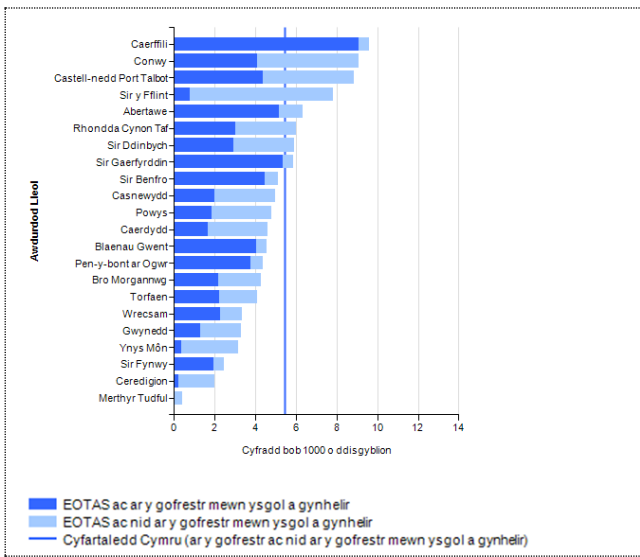


Table 3 shows the proportion of learners receiving education other than at school [EOTAS]. The highest rate is in Conwy and the lowest in Anglesey.

The tables below show progress over a rolling period in the main indicator for each key stage.

Table 4: % learners achieving in the Foundation Phase Indicator [FPI]

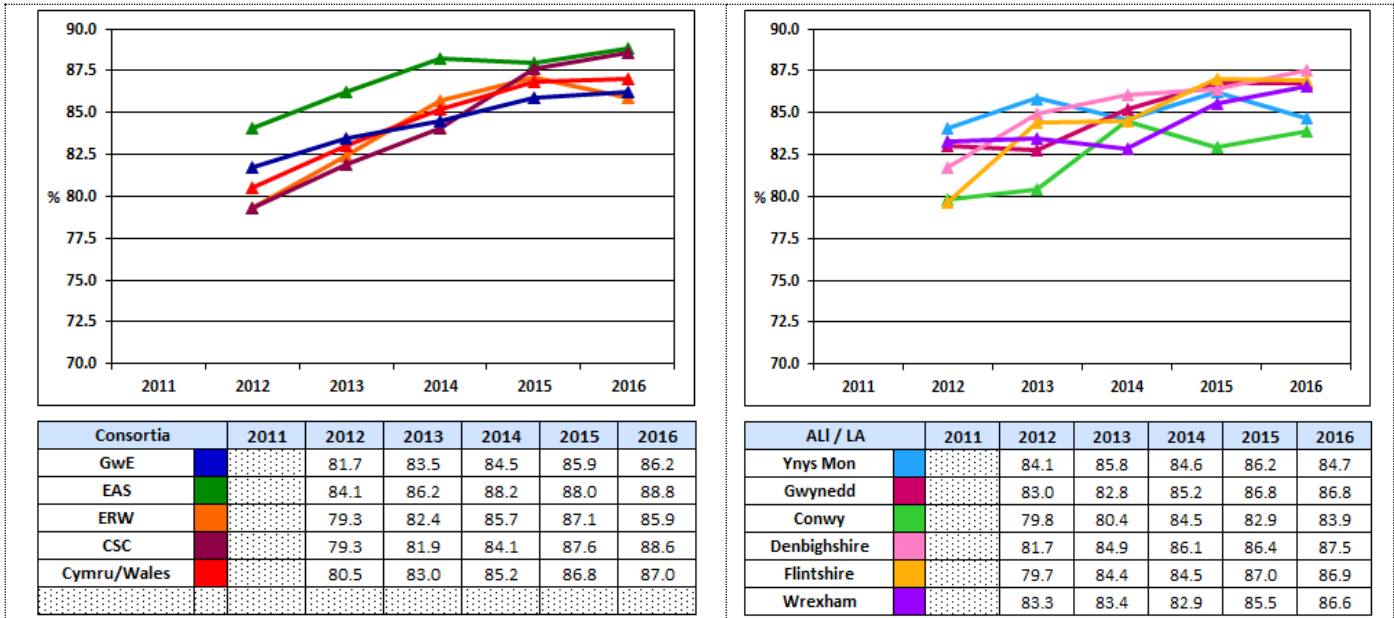


Table 5: % learners achieving in the Core Subject Indicator [CSI] at key stage 2 [KS2]

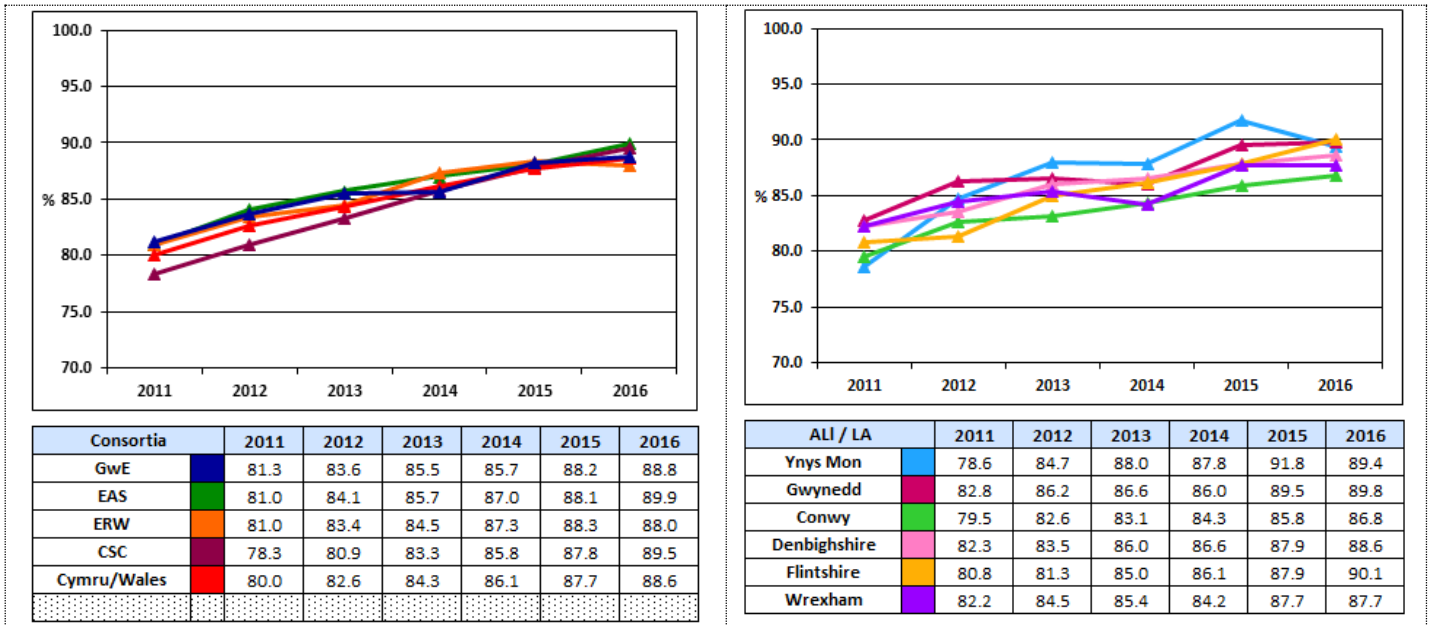


Table 6: % learners achieving in the Core Subject Indicator [CSI] at key stage 3 [KS3]

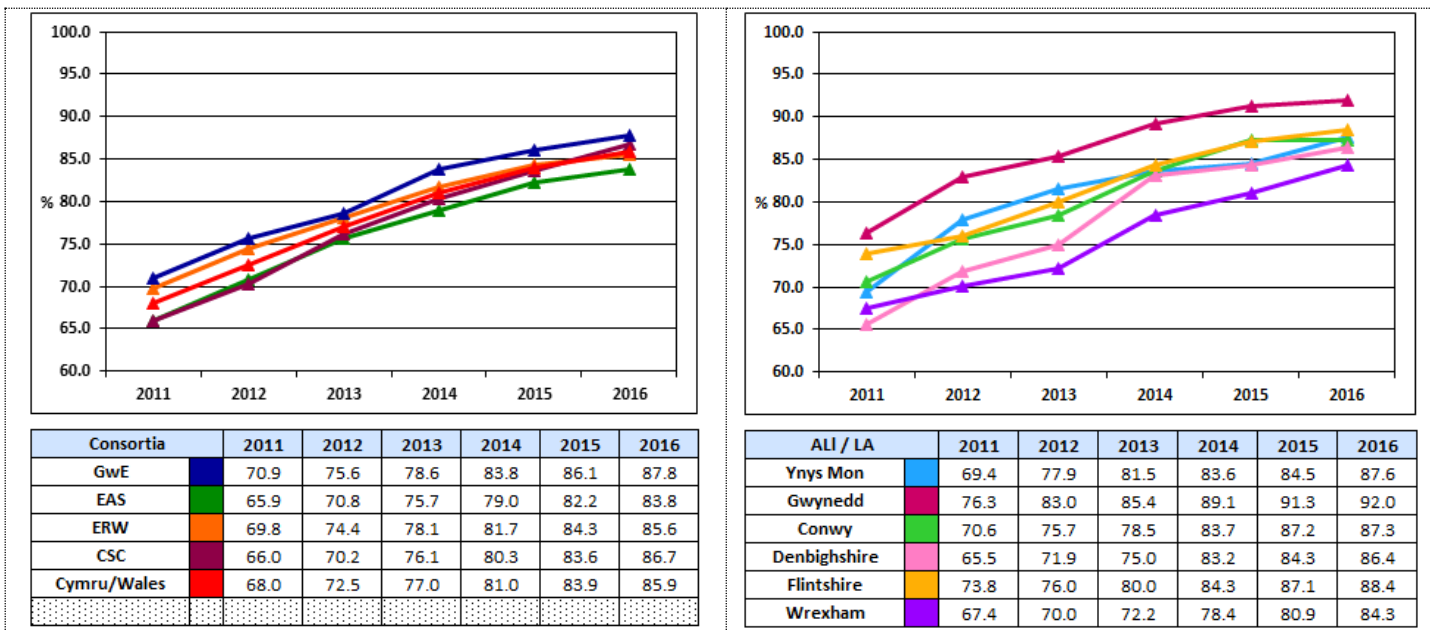


Table 7: % learners achieving in the Level 2 Inclusive Threshold [L2+]

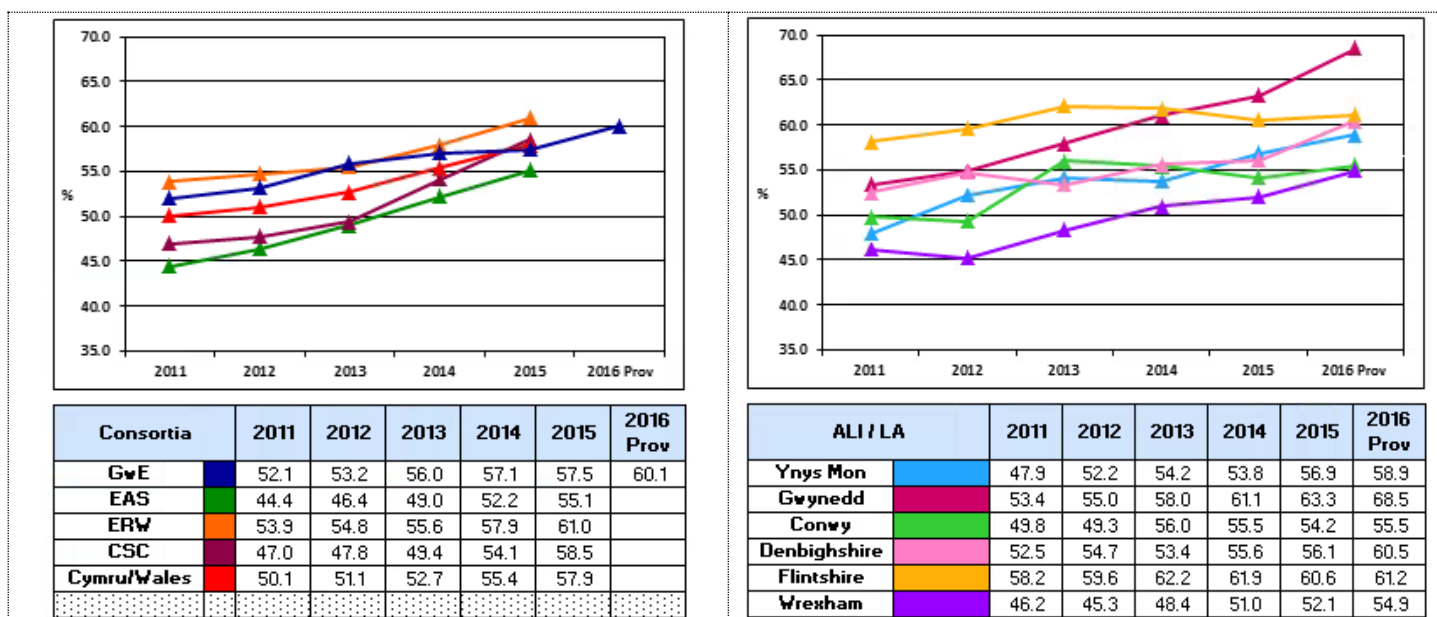


Table 8 summarises the rankings of the authorities in comparison to the Welsh authorities in the main indicator at each key stage. The number in brackets indicates the authority's comparative ranking based on the percentage of 5-15 year old pupils receiving FSM [see Table 1]. This is discussed in more detail in this report in the commentaries on each key stage.

Table 8: summary of the authorities' rankings in the main indicator for each key stage [Foundation Phase, KS2, KS3 and KS4]

	2014				2015				2016			
	FPI	CSI KS2	CSI KS3	L2+	FPI	CSI KS2	CSI KS3	L2+	FPI	CSI KS2	CSI KS3	L2+
Anglesey (10)	12	7	9	14	15	3	9	12	20	9	7	
Gwynedd (4)	10	14	1	5	10	6	1	5	14	7	2	
Conwy (8)	13	17	8	11	21	19	6	16	21	20	9	
Denbighshire (14)	9	10	10	10	13	12	12	14	10	14	12	
Flintshire (6)	13	13	5	3	9	11	7	8	13	5	6	
Wrexham (9)	20	19	16	18	19	14	19	20	15	18	16	
GwE (1)	3	4	1	2	4	2	1	3	3	3	1	

*Number in brackets is the FSM ranking (1 year)

FOUNDATION PHASE

Main messages

- The progress in the percentage of pupils achieving the Foundation Phase Indicator [FPI] between 2014 and 2016 is similar to the progress seen on national level.
- In 2016, GwE's performance in the CSI is lower than expected [3rd out of the 4 consortia], providing that the right to free school meals is an appropriate measure of deprivation. 5 out of 6 of the authorities perform lower than expected in relation to their free school meal ranking [FSM] (with Denbighshire performing better).
- In 2016 on the expected outcomes, a decrease is seen on regional level in the percentage achieving in the Welsh Language and Personal and Social Development indicators, and a slight increase in English Language and Mathematical Development. With the exception of Denbighshire, the authorities generally perform lower than their expected FSM rankings.
- On the higher outcomes [expected outcome +1], progress is seen in the English Language, Mathematical Development and Personal Development indicators, which is higher than or similar to the national progress. There was a decrease in the percentage of learners achieving in the Welsh Language indicator. The performance of individual authorities across the region varies significantly.
- The region's performance is below target for the FPI. With the exception of Welsh Language, performance is above target for the indicators on the expected and higher outcomes. Attention is required to ensure that targets are more challenging and aim for a performance that will rank authorities similarly to or better than their FSM ranking.
- However, performance is below target on the higher levels and especially for the language subjects.
- The performance of FSM learners varies. A slight increase is seen in the percentage of FSM learners achieving in the FPI, English Language and Mathematical Development (on the expected outcome and +1 outcome). However, there are still significant gaps between the performance of FSM and non-FSM pupils in several authorities across the range of indicators. In the FPI, the greatest gaps are seen in Anglesey, Flintshire and Conwy.
- The difference between the performances of the genders in the FPI is similar to what is seen on national level, with the greatest gap seen in Conwy and Denbighshire. However, the size of the gap between the performances of boys and girls across the range of indicators varies significantly in the individual authorities.

Aspects that require attention

- Improve the performances of local authorities on the expected outcomes and higher outcomes, ensuring that each authority's performance corresponds to its FSM ranking
- Improve the performance of FSM learners on the expected outcomes and higher outcomes, closing any significant gaps between the performances of FSM and non-FSM learners
- Ensure that individual local authorities' improvement plans specifically address the underperformance of boys or girls
- Improve the use of data in the foundation phase to set challenging regional targets and track the progress of pupils more effectively
- Review and challenge school targets in the foundation phase for 2017 in order to raise expectations and improve performance
- Ensure an effective programme for targeting support and guidance for underperforming or 'coasting' schools
- Ensure that foundation phase pedagogy is delivered effectively and that there are consistently good teaching and learning standards in all schools across the region
- Ensure that provision allows pupils to be challenged and to make good or better progress from their starting point
- Ensure that end of foundation phase teacher assessments provide a clear reflection of the standards of individual pupils
- Ensure a detailed analysis of reading/numeracy test data in order to identify specific schools where there is not a close enough correlation between performance and teacher assessments
- Ensure that schools gain access to Foundation Phase specialist support
- Ensure that processes are in place to allow effective school to school networking and collaboration, and that effective practice is cascaded and implemented across the region
- Provide guidance and support to enable newly qualified teachers to be effective foundation phase teachers
- Improve standards of provision within the foundation phase by further developing and improving the quality of leadership
- Evaluate the effectiveness of the Foundation Phase network, providing a clear and robust plan for future collaboration

FOUNDATION PHASE

Table 9: Foundation Phase – expected outcome

DCS/FPI	2014		2015		2016		Cynnydd / Progress	
	%	S/R	%	S/R	%	S/R	15->16	14->16
GwE	84.5	3	85.9	4	86.2	3	0.3	1.7
EAS	88.2	1	88.0	1	88.8	1	0.8	0.6
ERW	85.7	2	87.1	3	85.9	4	-1.2	0.2
CSC	84.1	4	87.6	2	88.6	2	1.0	4.5
Wales	85.2		86.8		87.0		0.2	1.8

DCS/FPI	2014		2015		2016		Cynnydd / Progress	
	%	S/R	%	S/R	%	S/R	15->16	14->16
Anglesey (10)	84.6	12	86.2	15	84.7	20	-1.5	0.1
Gwynedd (4)	85.2	10	86.8	10	86.8	14	0.0	1.6
Conwy (8)	84.5	13	82.9	21	83.9	21	1.0	-0.6
Denbighshire (14)	86.1	9	86.4	13	87.5	10	1.1	1.4
Flintshire (6)	84.5	13	87	9	86.9	13	-0.1	2.4
Wrexham (9)	82.9	20	85.5	19	86.6	15	1.1	3.7
GwE (1)	84.5	3	85.9	4	86.2	3	0.3	1.7
Wales	85.2		86.8		87.0		0.2	1.8

* Number in brackets is the FSM ranking (1 year)

Cymraeg D5+ Welsh O5+	2014		2015		2016		Cynnydd / Progress	
	%	S/R	%	S/R	%	S/R	15->16	14->16
GwE	88.4	4	88.8	4	87.8	4	-0.9	-0.6
EAS	90.8	2	91.6	3	93.4	2	1.8	2.6
ERW	90.2	3	92.2	2	90.9	3	-1.3	0.7
CSC	91.4	1	94.0	1	93.9	1	-0.1	2.5
Wales	89.8		91.3		90.7		-0.6	0.9

Cymraeg D5+ Welsh O5+	2014		2015		2016		Cynnydd / Progress	
	%	S/R	%	S/R	%	S/R	15->16	14->16
Anglesey (10)	88.1	17	89.8	18	86.2	21	-3.6	-1.9
Gwynedd (4)	89.4	13	88.4	20	88.7	17	0.4	-0.7
Conwy (8)	86.3	20	84.6	21	84.5	22	-0.1	-1.8
Denbighshire (14)	89.3	14	91.9	12	89.6	16	-2.3	0.3
Flintshire (6)	87.3	19	91.2	15	88.1	20	-3.0	0.9
Wrexham (9)	85.7	21	89.2	19	88.4	18	-0.7	2.7
GwE (1)	88.4	4	88.8	4	87.8	4	-0.9	-0.6
Wales	89.8		91.3		90.7		-0.6	0.9

Saesneg D5+ English O5+	2014		2015		2016		Cynnydd / Progress	
	%	S/R	%	S/R	%	S/R	15->16	14->16
GwE	86.5	2	87.6	3	87.8	3	0.1	1.2
EAS	90.3	1	90.0	1	90.3	1	0.3	0.0
ERW	86.2	3	87.3	4	86.0	4	-1.3	-0.2
CSC	85.7	4	88.7	2	89.4	2	0.7	3.7
Wales	86.6		88.0		88.0		0.0	1.4

Saesneg D5+ English O5+	2014		2015		2016		Cynnydd / Progress	
	%	S/R	%	S/R	%	S/R	15->16	14->16
Anglesey (10)	86.6	12	86.1	19	87.9	15	1.8	1.4
Gwynedd (4)	64.3	22	77.8	22	52.2	22	-25.6	-12.1
Conwy (8)	86.3	13	86.1	18	86.8	18	0.7	0.5
Denbighshire (14)	87.4	10	87.6	12	88.0	13	0.4	0.6
Flintshire (6)	87.4	9	89.0	9	88.4	11	-0.6	1.0
Wrexham (9)	85.6	15	87.2	13	87.9	14	0.7	2.4
GwE (1)	86.5	2	87.6	3	87.8	3	0.1	1.2
Wales	86.6		88.0		88.0		0.0	1.4

Dat Math D5+ Maths Dev O5+	2014		2015		2016		Cynnydd / Progress	
	%	S/R	%	S/R	%	S/R	15->16	14->16
GwE	88.9	2	89.4	4	89.5	3	0.2	0.6
EAS	90.9	1	90.7	1	91.3	1	0.6	0.4
ERW	88.9	3	89.8	3	88.9	4	-0.9	0.0
CSC	87.8	4	90.2	2	91.1	2	0.9	3.3
Wales	88.7		89.7		89.9		0.2	1.2

Dat Math D5+ Maths Dev O5+	2014		2015		2016		Cynnydd / Progress	
	%	S/R	%	S/R	%	S/R	15->16	14->16
Anglesey (10)	88.2	14	89.4	14	87.9	21	-1.5	-0.3
Gwynedd (4)	89.7	10	90.4	8	90.3	11	-0.2	0.6
Conwy (8)	89.7	11	87.9	20	88.0	20	0.1	-1.6
Denbighshire (14)	90.6	7	89.4	15	90.3	10	1.0	-0.3
Flintshire (6)	88.3	12	90.2	10	90.2	12	0.0	1.9
Wrexham (9)	87.7	16	88.7	18	89.5	17	0.8	1.8
GwE (1)	88.9	2	89.4	4	89.5	3	0.2	0.6
Wales	88.7		89.7		89.9		0.2	1.2

Dat Person D5+ Person Dev O5+	2014		2015		2016		Cynnydd / Progress	
	%	S/R	%	S/R	%	S/R	15->16	14->16
GwE	94.5	3	95.1	2	94.4	3	-0.7	0.0
EAS	95.2	1	95.6	1	95.0	1	-0.6	-0.2
ERW	94.7	2	95.1	3	94.4	4	-0.7	-0.3
CSC	93.6	4	94.7	4	94.9	2	0.2	1.3
Wales	94.2		94.8		94.5		-0.3	0.3

Dat Person D5+ Person Dev O5+	2014		2015		2016		Cynnydd / Progress	
	%	S/R	%	S/R	%	S/R	15->16	14->16
Anglesey (10)	94.3	13	95.8	6	93.7	21	-2.0	-0.6
Gwynedd (4)	93.4	19	95.5	10	95.5	5	0.0	2.1
Conwy (8)	95.2	10	94.7	17	94.0	19	-0.7	-1.3
Denbighshire (14)	95.3	9	95.7	7	94.9	9	-0.9	-0.5
Flintshire (6)	95.5	7	95.6	9	94.5	14	-1.1	-1.0
Wrexham (9)	93.2	20	93.9	21	94.0	18	0.1	0.8
GwE (1)	94.5	3	95.1	2	94.4	3	-0.7	0.0
Wales	94.2		94.8		94.5		-0.3	0.3

Table 10: Foundation Phase – expected outcome +1 (higher)

Cymraeg D6+ Welsh O6+	2014		2015		2016		Cynnydd / Progress	
	%	S/R	%	S/R	%	S/R	15->16	14->16
GwE	34.1	1	36.9	3	34.8	4	-2.1	0.7
EAS	33.6	2	32.0	4	36.1	2	4.1	2.5
ERW	32.5	3	37.4	2	35.4	3	-2.0	2.9
CSC	29.5	4	37.9	1	40.1	1	2.2	10.6
Wales	32.5		36.9		36.2		-0.7	3.7

Cymraeg D6+ Welsh O6+	2014		2015		2016		Cynnydd / Progress	
	%	S/R	%	S/R	%	S/R	15->16	14->16
Anglesey (10)	32.1	12	36.5	12	36.4	11	-0.2	4.3
Gwynedd (4)	37.1	5	38.9	8	35.0	14	-4.0	-2.1
Conwy (8)	35.2	9	29.8	19	33.7	16	3.9	-1.5
Denbighshire (14)	28.6	16	35.9	14	35.6	12	-0.3	7.0
Flintshire (6)	22.5	21	39.2	7	33.9	15	-5.3	11.3
Wrexham (9)	32.3	11	36.6	11	31.0	19	-5.6	-1.3
GwE (1)	34.1	1	36.9	3	34.8	4	-2.1	0.7
Wales	32.5		36.9		36.2		-0.7	3.7

Saesneg D6+ English O6+	2014		2015		2016		Cynnydd / Progress	
	%	S/R	%	S/R	%	S/R	15->16	14->16
GwE	32.5	2	33.6	4	36.2	2	2.7	3.8
EAS	35.6	1	36.3	1	39.3	1	3.0	3.7
ERW	32.3	3	34.3	2	34.3	4	0.0	2.0
CSC	30.2	4	33.8	3	36.2	3	2.4	6.0
Wales	32.2		34.2		36.2		2.0	4.0

Saesneg D6+ English O6+	2014		2015		2016		Cynnydd / Progress	
	%	S/R	%	S/R	%	S/R	15->16	14->16
Anglesey (10)	31.3	13	31.5	15	33.8	16	2.3	2.5
Gwynedd (4)	14.3	22	5.6	22	8.7	22	3.1	-5.6
Conwy (8)	32.6	10	30.9	18	33.5	17	2.6	0.9
Denbighshire (14)	29.2	=15	34.6	11	36.7	10	2.1	7.4
Flintshire (6)	35.1	5	36.5	7	36.7	9	0.2	1.7
Wrexham (9)	31.7	12	31.7	14	37.8	7	6.1	6.1
GwE (1)	32.5	2	33.6	4	36.2	2	2.7	3.8
Wales	32.2		34.2		36.2		2.0	4.0

Dat Math D6+ Maths Dev O6+	2014		2015		2016		Cynnydd / Progress	
	%	S/R	%	S/R	%	S/R	15->16	14->16
GwE	29.8	3	33.8	4	35.9	3	2.1	6.1
EAS	32.5	1	34.7	2	37.8	1	3.1	5.3
ERW	30.9	2	34.9	1	35.7	4	0.8	4.8
CSC	29.1	4	34.4	3	37.2	2	2.8	8.1
Wales	30.3		34.3		36.4		2.1	6.1

Dat Math D6+ Maths Dev O6+	2014		2015		2016		Cynnydd / Progress	
	%	S/R	%	S/R	%	S/R	15->16	14->16
Anglesey (10)	29.5	15	36.0	6	35.0	16	-1.0	5.5
Gwynedd (4)	32.5	=5	35.8	7	36.3	11	0.5	3.8
Conwy (8)	28.1	17	29.1	21	34.2	18	5.1	6.1
Denbighshire (14)	26.2	=18	35.6	8	35.1	15	-0.5	8.9
Flintshire (6)	31.1	=11	34.2	11	36.4	10	2.2	5.4
Wrexham (9)	30.0	14	32.8	17	36.9	9	4.1	7.0
GwE (1)	29.8	3	33.8	4	35.9	3	2.1	6.1
Wales	30.3		34.3		36.4		2.1	6.1

Dat Person D6+ Person Dev O6+	2014		2015		2016		Cynnydd / Progress	
	%	S/R	%	S/R	%	S/R	15->16	14->16
GWE	52.8	3	58.1	2	61.6	1	3.5	8.8
EAS	54.4	1	56.5	3	59.0	3	2.5	4.6
ERW	54.1	2	58.9	1	59.4	2	0.5	5.3
CSC	47.0	4	52.5	4	57.6	4	5.1	10.6
Wales	51.5		56.0		58.9		2.9	7.4

Dat Person D6+ Person Dev O6+	2014		2015		2016		Cynnydd / Progress	
	%	S/R	%	S/R	%	S/R	15->16	14->16
Anglesey (10)	54.5	9	59.6	8	60.3	9	0.7	5.8
Gwynedd (4)	60.0	3	65.3	4	69.4	4	4.1	9.4
Conwy (8)	52.1	=12	59.9	7	62.9	7	3.1	10.9
Denbighshire (14)	45.8	19	58.4	=10	67.7	5	9.3	21.9
Flintshire (6)	57.2	5	60.8	6	57.6	13	-3.2	0.4
Wrexham (9)	46.4	18	47.9	21	55.6	16	7.7	9.2
GwE (1)	52.8	3	58.1	2	61.6	1	3.5	8.8
Wales	51.5		56.0		58.9		2.9	7.4

Table 11: Foundation Phase – performance against targets and projections

GWE

Cyfnod Sylfaen – Foundation Phase						
Dangosyddion Indicators	Perff 2016 Perf 2016	2015 -> 2016	Targed 2016 Target 2016	Perff v Tgd Perf v Tgt	Rhagamcan 2016 Latest Proj 2016	Perff v Rhag Perf v Proj
DCS - FPI	86.2	0.4	87.2	-1.0	86.5	-0.3
Cymraeg D5+ - Welsh 1st Lang O5+	87.8	-0.9	88.5	-0.6	88.9	-1.1
Cymraeg D6+ - Welsh 1st Lang O6+	34.8	-2.1	37.7	-2.9	36.6	-1.7
Saesneg D5+ - English O5+	87.8	0.1	86.4	1.4	86.6	1.2
Saesneg D6+ - English O6+	36.2	2.7	33.8	2.4	34.0	2.2
Dat Math D5+ - Math Dev O5+	89.5	0.2	88.6	0.9	88.6	0.9
Dat Math D6+ - Math Dev O6+	35.9	2.1	35.7	0.2	35.5	0.4
Dat Personol D5+ - Personal Dev O5+	94.4	-0.7	93.7	0.8	93.5	0.9
Dat Personol D6+ - Personal Dev O6+	61.6	3.5	57.6	4.0	59.4	2.2

Anglesey

Cyfnod Sylfaen – Foundation Phase						
Dangosyddion Indicators	Perff 2016 Perf 2016	2015 -> 2016	Targed 2016 Target 2016	Perff v Tgd Perf v Tgt	Rhagamcan 2016 Latest Proj 2016	Perff v Rhag Perf v Proj
DCS - FPI	84.7	-1.5	86.4	-1.7	85.6	-0.9
Cymraeg D5+ - Welsh 1st Lang O5+	86.2	-3.6	90.7	-4.5	89.8	-3.6
Cymraeg D6+ - Welsh 1st Lang O6+	36.4	-0.2	40.0	-3.6	38.0	-1.6
Saesneg D5+ - English O5+	87.9	1.8	87.0	1.0	86.0	1.9
Saesneg D6+ - English O6+	33.8	2.3	33.8	0.0	33.3	0.5
Dat Math D5+ - Math Dev O5+	87.9	-1.5	89.3	-1.4	88.6	-0.7
Dat Math D6+ - Math Dev O6+	35.0	-1.0	39.5	-4.5	36.2	-1.1
Dat Personol D5+ - Personal Dev O5+	93.7	-2.0	94.0	-0.3	93.6	0.1
Dat Personol D6+ - Personal Dev O6+	60.3	0.7	59.9	0.5	63.3	-3.0

Gwynedd

Cyfnod Sylfaen – Foundation Phase 2						
Dangosyddion Indicators	Perff 2016 Perf 2016	2015 -> 2016	Targed 2016 Target 2016	Perff v Tgd Perf v Tgt	Rhagamcan 2016 Latest Proj 2016	Perff v Rhag Perf v Proj
DCS - FPI	86.8	0.0	87.4	-0.6	87.0	-0.2
Cymraeg D5+ - Welsh 1st Lang O5+	88.7	0.4	88.5	0.3	90.1	-1.4
Cymraeg D6+ - Welsh 1st Lang O6+	35.0	-4.0	37.8	-2.8	37.3	-2.3
Saesneg D5+ - English O5+	52.2	-25.6	33.3	18.8	39.3	12.9
Saesneg D6+ - English O6+	8.7	3.1	12.1	-3.4	14.3	-5.6
Dat Math D5+ - Math Dev O5+	90.3	-0.2	88.9	1.4	90.5	-0.2
Dat Math D6+ - Math Dev O6+	36.3	0.5	40.8	-4.5	37.5	-1.2
Dat Personol D5+ - Personal Dev O5+	95.5	0.0	94.7	0.8	95.3	0.2
Dat Personol D6+ - Personal Dev O6+	69.4	4.1	64.9	4.5	69.6	-0.1

Conwy

Cyfnod Sylfaen – Foundation Phase						
Dangosyddion Indicators	Perff 2016 Perf 2016	2015 -> 2016	Targed 2016 Target 2016	Perff v Tgd Perf v Tgt	Rhagamcan 2016 Latest Proj 2016	Perff v Rhag Perf v Proj
DCS - FPI	83.9	0.9	86.0	-2.1	83.0	0.9
Cymraeg D5+ - Welsh 1st Lang O5+	84.5	-0.1	82.2	2.3	82.9	1.6
Cymraeg D6+ - Welsh 1st Lang O6+	33.7	3.9	35.1	-1.4	32.3	1.4
Saesneg D5+ - English O5+	86.8	0.7	85.8	1.0	85.9	1.0
Saesneg D6+ - English O6+	33.5	2.6	29.7	3.8	31.7	1.8
Dat Math D5+ - Math Dev O5+	88.0	0.1	86.5	1.5	87.0	1.0
Dat Math D6+ - Math Dev O6+	34.2	5.1	29.5	4.7	32.5	1.7
Dat Personol D5+ - Personal Dev O5+	94.0	-0.7	93.3	0.7	93.2	0.8
Dat Personol D6+ - Personal Dev O6+	62.9	3.1	57.4	5.6	60.8	2.1

Denbighshire

Cyfnod Sylfaen – Foundation Phase						
Dangosyddion Indicators	Perff 2016 Perf 2016	2015 -> 2016	Targed 2016 Target 2016	Perff v Tgd Perf v Tgt	Rhagamcan 2016 Latest Proj 2016	Perff v Rhag Perf v Proj
DCS - FPI	87.5	1.1	85.5	2.0	86.5	1.0
Cymraeg D5+ - Welsh 1st Lang O5+	89.6	-2.3	88.7	0.9	85.5	4.1
Cymraeg D6+ - Welsh 1st Lang O6+	35.6	-0.3	32.9	2.8	33.1	2.5
Saesneg D5+ - English O5+	88.0	0.4	85.2	2.8	85.2	2.8
Saesneg D6+ - English O6+	36.7	2.1	28.4	8.3	29.0	7.7
Dat Math D5+ - Math Dev O5+	90.3	1.0	87.9	2.4	87.1	3.2
Dat Math D6+ - Math Dev O6+	35.1	-0.5	28.2	6.9	30.1	5.0
Dat Personol D5+ - Personal Dev O5+	94.9	-0.9	94.9	-0.1	90.8	4.1
Dat Personol D6+ - Personal Dev O6+	67.7	9.3	56.8	10.9	58.7	9.0

Flintshire

Cyfnod Sylfaen – Foundation Phase						
Dangosyddion Indicators	Perff 2016 Perf 2016	2015 -> 2016	Targed 2016 Target 2016	Perff v Tgd Perf v Tgt	Rhagamcan 2016 Latest Proj 2016	Perff v Rhag Perf v Proj
DCS - FPI	86.9	-0.1	87.9	-1.0	87.1	-0.2
Cymraeg D5+ - Welsh 1st Lang O5+	88.1	-3.0	86.4	1.7	90.7	-2.5
Cymraeg D6+ - Welsh 1st Lang O6+	33.9	-5.3	33.9	0.0	44.9	-11.0
Saesneg D5+ - English O5+	88.4	-0.6	85.3	3.1	86.3	2.1
Saesneg D6+ - English O6+	36.7	0.2	35.0	1.7	35.7	1.1
Dat Math D5+ - Math Dev O5+	90.2	0.0	87.3	2.8	87.2	2.9
Dat Math D6+ - Math Dev O6+	36.4	2.2	35.9	0.6	36.9	-0.5
Dat Personol D5+ - Personal Dev O5+	94.5	-1.1	91.6	2.9	93.1	1.5
Dat Personol D6+ - Personal Dev O6+	57.6	-3.2	54.5	3.1	55.4	2.2

Wrexham

Cyfnod Sylfaen – Foundation Phase						
Dangosyddion Indicators	Perff 2016 Perf 2016	2015 -> 2016	Targed 2016 Target 2016	Perff v Tgd Perf v Tgt	Rhagamcan 2016 Latest Proj 2016	Perff v Rhag Perf v Proj
DCS - FPI	86.6	1.1	88.7	-2.1	88.3	-1.7
Cymraeg D5+ - Welsh 1st Lang O5+	88.4	-0.7	91.0	-2.6	90.6	-2.2
Cymraeg D6+ - Welsh 1st Lang O6+	31.0	-5.6	43.9	-12.8	34.3	-3.3
Saesneg D5+ - English O5+	87.9	0.7	89.7	-1.8	89.1	-1.2
Saesneg D6+ - English O6+	37.8	6.1	38.4	-0.6	36.7	1.0
Dat Math D5+ - Math Dev O5+	89.5	0.8	91.4	-1.9	90.7	-1.2
Dat Math D6+ - Math Dev O6+	36.9	4.1	38.7	-1.8	37.6	-0.7
Dat Personol D5+ - Personal Dev O5+	94.0	0.1	94.3	-0.4	94.8	-0.8
Dat Personol D6+ - Personal Dev O6+	55.6	7.7	55.1	0.5	53.7	2.0

Table 12: Foundation Phase – performance of FSM learners

DCS/FPI	2014			2015			2016		
	PYD FSM	Dim-PYD Non-FSM	Gwahan. Difference	PYD FSM	Dim-PYD Non-FSM	Gwahan. Difference	PYD FSM	Dim-PYD Non-FSM	Gwahan. Difference
GwE	70.8	87.6	-16.9	72.0	88.9	-16.9	73.3	89.0	-15.7
EAS									
ERW									
CSC									
Wales	72.4	88.6	-16.3	75.1	90.0	-14.9			

DCS/FPI	2014			2015			2016		
	PYD FSM	Dim-PYD Non-FSM	Gwahan. Difference	PYD FSM	Dim-PYD Non-FSM	Gwahan. Difference	PYD FSM	Dim-PYD Non-FSM	Gwahan. Difference
Anglesey	67.4	88.9	-21.5	77.1	88.5	-11.4	69.0	88.0	-19.0
Gwynedd	71.0	87.9	-17.0	75.4	88.7	-13.3	76.5	88.6	-12.1
Conwy	71.7	87.9	-16.3	69.0	86.0	-17.1	69.4	86.8	-17.3
Denbighshire	75.9	88.9	-13.0	73.4	89.9	-16.6	74.6	91.0	-16.3
Flintshire	69.3	87.1	-17.8	71.2	90.1	-18.9	71.5	90.0	-18.4
Wrexham	68.9	86.3	-17.4	69.2	89.0	-19.8	76.5	89.0	-12.5

Cymraeg D5+ Welsh O5+	2014			2015			2016		
	PYD FSM	Dim-PYD Non-FSM	Gwahan. Difference	PYD FSM	Dim-PYD Non-FSM	Gwahan. Difference	PYD FSM	Dim-PYD Non-FSM	Gwahan. Difference
GwE	77.0	90.4	-13.3	77.0	90.8	-13.8	73.7	90.0	-16.3
EAS									
ERW									
CSC									
Wales	78.2	91.6	-13.5	80.9	93.0	-12.1			

Cymraeg D5+ Welsh O5+	2014			2015			2016		
	PYD FSM	Dim-PYD Non-FSM	Gwahan. Difference	PYD FSM	Dim-PYD Non-FSM	Gwahan. Difference	PYD FSM	Dim-PYD Non-FSM	Gwahan. Difference
Anglesey	71.6	91.4	-19.8	81.1	91.9	-10.8	65.4	90.0	-24.6
Gwynedd	77.2	91.7	-14.5	77.3	90.3	-13.0	77.9	90.7	-12.8
Conwy	79.4	87.2	-7.8	73.7	86.1	-12.5	63.2	86.2	-23.0
Denbighshire	79.2	90.3	-11.2	72.7	93.5	-20.8	90.9	89.8	1.1
Flintshire	83.3	87.5	-4.2	78.6	93.2	-14.6	66.7	90.5	-23.8
Wrexham	86.7	85.5	1.1	69.0	92.7	-23.8	63.2	90.9	-27.7

Cymraeg D6+ Welsh O6+	2014			2015			2016		
	PYD FSM	Dim-PYD Non-FSM	Gwahan. Difference	PYD FSM	Dim-PYD Non-FSM	Gwahan. Difference	PYD FSM	Dim-PYD Non-FSM	Gwahan. Difference
GwE	14.8	37.3	-22.6	16.0	40.4	-24.4	13.8	37.9	-24.1
EAS									
ERW									
CSC									
Wales	14.6	35.2	-20.6	17.2	39.8	-22.6			

Cymraeg D6+ Welsh O6+	2014			2015			2016		
	PYD FSM	Dim-PYD Non-FSM	Gwahan. Difference	PYD FSM	Dim-PYD Non-FSM	Gwahan. Difference	PYD FSM	Dim-PYD Non-FSM	Gwahan. Difference
Anglesey	13.6	35.9	-22.2	15.6	41.0	-25.5	6.2	41.8	-35.6
Gwynedd	16.8	40.7	-23.8	16.6	42.8	-26.3	18.2	37.9	-19.7
Conwy	20.6	37.2	-16.6	10.5	32.6	-22.1	5.3	36.0	-30.7
Denbighshire	12.5	30.3	-17.8	13.6	37.9	-24.3	18.2	37.2	-19.0
Flintshire	0.0	24.0	-24.0	21.4	42.0	-20.6	8.3	36.2	-27.9
Wrexham	3.3	37.7	-34.4	20.7	39.4	-18.7	10.5	33.0	-22.5

Saesneg D5+ English O5+	2014			2015			2016		
	PYD FSM	Dim-PYD Non-FSM	Gwahan. Difference	PYD FSM	Dim-PYD Non-FSM	Gwahan. Difference	PYD FSM	Dim-PYD Non-FSM	Gwahan. Difference
GwE	73.4	89.9	-16.5	74.1	90.9	-16.8	76.6	90.6	-14.0
EAS									
ERW									
CSC									
Wales	75.1	90.2	-15.1	77.8	91.1	-13.3			

Saesneg D5+ English O5+	2014			2015			2016		
	PYD FSM	Dim-PYD Non-FSM	Gwahan. Difference	PYD FSM	Dim-PYD Non-FSM	Gwahan. Difference	PYD FSM	Dim-PYD Non-FSM	Gwahan. Difference
Anglesey	70.0	93.2	-23.2	75.6	89.0	-13.3	83.3	89.1	-5.8
Gwynedd	100.0	61.9	38.1	100.0	63.6	36.4	0.0	55.0	-55.0
Conwy	74.9	89.8	-14.9	72.7	89.6	-16.8	75.2	89.6	-14.4
Denbighshire	77.9	90.7	-12.8	77.0	91.3	-14.3	74.3	92.6	-18.3
Flintshire	70.2	90.6	-20.4	74.3	92.0	-17.7	76.4	90.9	-14.5
Wrexham	72.3	89.0	-16.6	71.8	90.5	-18.7	78.6	90.5	-11.8

Saesneg D6+ English O6+	2014			2015			2016		
	PYD FSM	Dim-PYD Non-FSM	Gwahan. Difference	PYD FSM	Dim-PYD Non-FSM	Gwahan. Difference	PYD FSM	Dim-PYD Non-FSM	Gwahan. Difference
GwE	16.9	36.6	-19.7	16.9	37.5	-20.6	20.3	40.1	-19.8
EAS									
ERW									
CSC									
Wales	16.5	36.9	-20.4	17.7	39.1	-21.4			

Saesneg D6+ English O6+	2014			2015			2016		
	PYD FSM	Dim-PYD Non-FSM	Gwahan. Difference	PYD FSM	Dim-PYD Non-FSM	Gwahan. Difference	PYD FSM	Dim-PYD Non-FSM	Gwahan. Difference
Anglesey	24.0	34.2	-10.2	19.5	34.3	-14.8	14.6	40.4	-25.8
Gwynedd	0.0	19.0	-19.0	0.0	9.1	-9.1	0.0	10.0	-10.0
Conwy	21.1	36.3	-15.2	14.5	34.9	-20.3	22.4	36.2	-13.8
Denbighshire	15.7	34.2	-18.5	20.8	39.3	-18.5	16.8	43.3	-26.6
Flintshire	12.9	39.1	-26.2	16.0	40.8	-24.8	18.8	40.4	-21.6
Wrexham	17.0	35.3	-18.3	15.8	35.1	-19.3	24.4	41.0	-16.6

Dat Math D5+ Maths Dev O5+	2014			2015			2016		
	PYD FSM	Dim-PYD Non-FSM	Gwahan. Difference	PYD FSM	Dim-PYD Non-FSM	Gwahan. Difference	PYD FSM	Dim-PYD Non-FSM	Gwahan. Difference
GwE	78.6	91.3	-12.7	77.6	91.9	-14.3	77.9	92.1	-14.2
EAS									
ERW									
CSC									
Wales	77.9	91.6	-13.7	80.0	92.3	-12.3			

Dat Math D5+ Maths Dev O5+	2014			2015			2016		
	PYD FSM	Dim-PYD Non-FSM	Gwahan. Difference	PYD FSM	Dim-PYD Non-FSM	Gwahan. Difference	PYD FSM	Dim-PYD Non-FSM	Gwahan. Difference
Anglesey	74.6	91.5	-16.9	80.9	91.4	-10.5	75.2	90.6	-15.4
Gwynedd	75.8	92.3	-16.5	79.8	92.2	-12.5	79.8	92.1	-12.4
Conwy	79.8	92.2	-12.4	79.8	89.7	-9.9	75.6	90.6	-15.0
Denbighshire	84.2	92.5	-8.3	78.2	92.5	-14.2	79.3	93.3	-13.9
Flintshire	78.7	90.0	-11.2	76.8	92.8	-16.0	76.0	93.0	-17.0
Wrexham	76.9	90.5	-13.5	73.6	91.9	-18.4	80.1	91.8	-11.8

Dat Math D6+ Maths Dev O6+	2014			2015			2016		
	PYD FSM	Dim-PYD Non-FSM	Gwahan. Difference	PYD FSM	Dim-PYD Non-FSM	Gwahan. Difference	PYD FSM	Dim-PYD Non-FSM	Gwahan. Difference
GwE	15.7	33.0	-17.3	17.9	37.2	-19.3	19.5	39.3	-19.8
EAS									
ERW									
CSC									
Wales	15.3	34.2	-18.9	17.5	38.7	-21.2			

Dat Math D6+ Maths Dev O6+	2014			2015			2016		
	PYD FSM	Dim-PYD Non-FSM	Gwahan. Difference	PYD FSM	Dim-PYD Non-FSM	Gwahan. Difference	PYD FSM	Dim-PYD Non-FSM	Gwahan. Difference
Anglesey	15.2	33.0	-17.8	21.4	39.3	-17.9	14.0	39.6	-25.7
Gwynedd	17.2	35.4	-18.2	19.1	38.8	-19.7	17.5	39.7	-22.2
Conwy	19.7	30.4	-10.6	17.2	31.7	-14.4	20.6	36.9	-16.3
Denbighshire	12.3	30.2	-17.9	20.6	39.7	-19.1	16.9	39.7	-22.8
Flintshire	13.8	34.1	-20.3	13.2	38.5	-25.2	18.4	40.0	-21.6
Wrexham	16.0	33.4	-17.4	18.6	35.9	-17.2	25.6	39.5	-13.9

Dat Person D5+ Person Dev O5+	2014			2015			2016		
	PYD FSM	Dim-PYD Non-FSM	Gwahan. Difference	PYD FSM	Dim-PYD Non-FSM	Gwahan. Difference	PYD FSM	Dim-PYD Non-FSM	Gwahan. Difference
GwE	87.1	96.2	-9.1	89.2	96.4	-7.2	86.8	96.1	-9.3
EAS									
ERW									
CSC									
Wales	88.0	95.9	-7.9	89.6	96.3	-6.8			

Dat Person D5+ Person Dev O5+	2014			2015			2016		
	PYD FSM	Dim-PYD Non-FSM	Gwahan. Difference	PYD FSM	Dim-PYD Non-FSM	Gwahan. Difference	PYD FSM	Dim-PYD Non-FSM	Gwahan. Difference
Anglesey	85.5	96.5	-11.0	90.1	97.2	-7.2	86.0	95.5	-9.4
Gwynedd	82.8	95.3	-12.5	90.2	96.4	-6.2	89.1	96.5	-7.5
Conwy	88.8	97.0	-8.1	89.2	95.9	-6.8	85.6	95.6	-10.0
Denbighshire	91.2	96.6	-5.4	91.5	96.9	-5.4	85.4	97.2	-11.8
Flintshire	86.6	97.0	-10.4	89.1	97.0	-7.9	86.5	96.3	-9.8
Wrexham	86.5	94.9	-8.4	86.4	95.5	-9.1	87.9	95.6	-7.7

Dat Person D6+ Person Dev O6+	2014			2015			2016		
	PYD FSM	Dim-PYD Non-FSM	Gwahan. Difference	PYD FSM	Dim-PYD Non-FSM	Gwahan. Difference	PYD FSM	Dim-PYD Non-FSM	Gwahan. Difference
GwE	31.7	57.6	-25.9	36.3	62.8	-26.4	40.7	66.0	-25.3
EAS									
ERW									
CSC									
Wales	31.2	56.8	-25.6	34.4	61.7	-27.4			

Dat Person D6+ Person Dev O6+	2014			2015			2016		
	PYD FSM	Dim-PYD Non-FSM	Gwahan. Difference	PYD FSM	Dim-PYD Non-FSM	Gwahan. Difference	PYD FSM	Dim-PYD Non-FSM	Gwahan. Difference
Anglesey	37.7	58.7	-21.0	40.5	64.1	-23.6	35.7	65.9	-30.2
Gwynedd	34.9	64.5	-29.6	39.3	70.0	-30.7	50.8	72.7	-21.9
Conwy	34.8	56.6	-21.9	39.4	64.5	-25.1	37.8	68.1	-30.3
Denbighshire	23.2	52.2	-29.0	41.5	63.0	-21.4	47.4	73.0	-25.6
Flintshire	32.7	61.5	-28.8	35.4	65.9	-30.5	33.3	62.4	-29.1
Wrexham	30.1	50.5	-20.4	27.1	52.3	-25.2	40.9	59.0	-18.1

Table 13: Foundation Phase – difference between the genders

DCS/FPI	2014			2015			2016		
	Bechgyn Boys	Merched Girls	Gwahan. Difference	Bechgyn Boys	Merched Girls	Gwahan. Difference	Bechgyn Boys	Merched Girls	Gwahan. Difference
GwE	80.2	89.0	-8.7	81.8	90.1	-8.3	82.2	90.4	-8.2
EAS	84.4	92.0	-7.6	84.7	91.6	-6.9	84.8	93.1	-8.3
ERW	81.6	92.0	-10.4	83.4	91.0	-7.6	82.1	89.8	-7.7
CSC	80.0	88.6	-8.6	83.6	91.7	-8.1	84.4	92.9	-8.5
Wales	81.0	89.5	-8.5	83.0	90.8	-7.8	83.0	91.2	-8.2

DCS/FPI	2014			2015			2016		
	Bechgyn Boys	Merched Girls	Gwahan. Difference	Bechgyn Boys	Merched Girls	Gwahan. Difference	Bechgyn Boys	Merched Girls	Gwahan. Difference
Anglesey	80.3	89.3	-9.0	81.1	91.3	-10.2	80.8	88.8	-7.9
Gwynedd	80.6	89.8	-9.3	81.6	92.1	-10.5	82.0	91.7	-9.7
Conwy	80.8	88.3	-7.5	80.3	85.5	-5.3	78.7	88.8	-10.1
Denbighshire	82.4	90.1	-7.7	82.5	90.7	-8.2	82.6	92.6	-10.0
Flintshire	80.3	88.8	-8.5	83.4	90.9	-7.5	83.6	90.3	-6.8
Wrexham	78.0	88.0	-10.0	80.8	90.0	-9.2	83.6	89.8	-6.2

Cymraeg D5+ Welsh O5+	2014			2015			2016		
	Bechgyn Boys	Merched Girls	Gwahan. Difference	Bechgyn Boys	Merched Girls	Gwahan. Difference	Bechgyn Boys	Merched Girls	Gwahan. Difference
GwE	83.5	93.5	-10.0	84.2	93.3	-9.1	83.5	92.1	-8.6
EAS	86.2	94.7	-8.5	86.9	95.6	-8.7	90.2	96.6	-6.4
ERW	87.2	94.7	-7.5	89.0	95.2	-6.2	87.6	94.2	-6.6
CSC	87.9	94.6	-6.7	92.6	95.4	-2.8	91.3	96.5	-5.2
Wales	85.9	93.8	-7.9	87.9	94.6	-6.7	87.1	94.1	-7.0

Cymraeg D5+ Welsh O5+	2014			2015			2016		
	Bechgyn Boys	Merched Girls	Gwahan. Difference	Bechgyn Boys	Merched Girls	Gwahan. Difference	Bechgyn Boys	Merched Girls	Gwahan. Difference
Anglesey	83.2	93.5	-10.3	86.2	93.2	-7.0	83.4	89.3	-5.9
Gwynedd	85.1	93.6	-8.5	82.9	94.1	-11.3	83.5	94.0	-10.5
Conwy	80.0	92.4	-12.4	78.9	90.2	-11.2	78.4	89.4	-11.0
Denbighshire	85.4	93.6	-8.2	88.7	95.1	-6.5	86.6	92.5	-5.9
Flintshire	82.4	92.2	-9.8	90.2	91.8	-1.6	86.0	89.7	-3.7
Wrexham	77.2	95.5	-18.2	86.7	91.3	-4.7	84.0	92.7	-8.8

Cymraeg D6+ Welsh O6+	2014			2015			2016		
	Bechgyn Boys	Merched Girls	Gwahan. Difference	Bechgyn Boys	Merched Girls	Gwahan. Difference	Bechgyn Boys	Merched Girls	Gwahan. Difference
GwE	27.3	41.1	-13.8	28.4	45.3	-17.0	27.9	41.7	-13.8
EAS	27.3	38.9	-11.6	26.5	36.7	-10.2	27.4	44.9	-17.5
ERW	26.3	38.9	-12.6	28.5	45.8	-17.3	26.9	43.7	-16.8
CSC	24.5	34.1	-9.6	29.8	45.9	-16.1	33.4	46.5	-13.1
Wales	26.3	38.6	-12.3	28.6	44.8	-16.2	28.6	43.7	-15.1

Cymraeg D6+ Welsh O6+	2014			2015			2016		
	Bechgyn Boys	Merched Girls	Gwahan. Difference	Bechgyn Boys	Merched Girls	Gwahan. Difference	Bechgyn Boys	Merched Girls	Gwahan. Difference
Anglesey	23.7	41.5	-17.7	29.5	43.2	-13.7	30.0	43.3	-13.3
Gwynedd	30.9	43.1	-12.2	28.6	49.8	-21.3	27.7	42.2	-14.5
Conwy	26.4	43.8	-17.3	25.7	34.0	-8.3	27.6	38.7	-11.1
Denbighshire	24.1	33.6	-9.5	29.8	42.0	-12.2	28.2	42.9	-14.7
Flintshire	13.7	31.4	-17.6	31.7	44.3	-12.6	28.0	38.2	-10.2
Wrexham	27.7	37.5	-9.8	24.4	47.1	-22.7	22.6	39.1	-16.4

Saesneg D5+ English O5+	2014			2015			2016		
	Bechgyn Boys	Merched Girls	Gwahan. Difference	Bechgyn Boys	Merched Girls	Gwahan. Difference	Bechgyn Boys	Merched Girls	Gwahan. Difference
GwE	82.9	90.4	-7.6	83.8	91.7	-7.9	83.7	92.0	-8.3
EAS	86.8	93.9	-7.1	87.3	93.0	-5.7	86.5	94.5	-8.0
ERW	81.4	93.9	-12.5	83.5	91.4	-7.9	81.8	90.4	-8.6
CSC	81.8	89.9	-8.1	84.6	93.2	-8.6	85.3	93.8	-8.5
Wales	82.6	90.9	-8.3	84.3	91.9	-7.6	84.0	92.3	-8.3

Saesneg D5+ English O5+	2014			2015			2016		
	Bechgyn Boys	Merched Girls	Gwahan. Difference	Bechgyn Boys	Merched Girls	Gwahan. Difference	Bechgyn Boys	Merched Girls	Gwahan. Difference
Anglesey	83.3	89.9	-6.6	79.1	94.1	-14.9	82.5	93.3	-10.7
Gwynedd	46.7	84.6	-37.9	50.0	91.7	-41.7	50.0	57.1	-7.1
Conwy	83.6	89.0	-5.4	84.1	88.1	-3.9	82.1	91.7	-9.7
Denbighshire	84.5	90.6	-6.0	83.2	92.6	-9.4	82.9	93.3	-10.4
Flintshire	83.1	91.9	-8.8	85.4	93.0	-7.6	84.5	92.6	-8.2
Wrexham	81.8	89.6	-7.8	82.9	91.4	-8.5	85.2	90.9	-5.6

Saesneg D6+ English O6+	2014			2015			2016		
	Bechgyn Boys	Merched Girls	Gwahan. Difference	Bechgyn Boys	Merched Girls	Gwahan. Difference	Bechgyn Boys	Merched Girls	Gwahan. Difference
GwE	26.6	38.6	-12.0	27.0	40.5	-13.5	30.2	42.6	-12.4
EAS	29.6	41.6	-12.0	29.5	43.8	-14.3	33.8	45.3	-11.5
ERW	25.6	41.6	-16.0	27.3	42.0	-14.7	28.6	40.4	-11.8
CSC	24.9	36.0	-11.1	28.1	39.8	-11.7	30.7	42.2	-11.5
Wales	26.3	38.4	-12.1	27.9	41.1	-13.2	30.6	42.2	-11.6

Saesneg D6+ English O6+	2014			2015			2016		
	Bechgyn Boys	Merched Girls	Gwahan. Difference	Bechgyn Boys	Merched Girls	Gwahan. Difference	Bechgyn Boys	Merched Girls	Gwahan. Difference
Anglesey	24.5	38.4	-13.9	20.0	44.6	-24.6	27.2	40.4	-13.2
Gwynedd	13.3	15.4	-2.1	0.0	8.3	-8.3	12.5	0.0	12.5
Conwy	29.2	36.0	-6.8	26.0	35.7	-9.8	26.3	40.8	-14.4
Denbighshire	23.5	35.7	-12.2	28.5	41.7	-13.2	30.6	43.1	-12.5
Flintshire	27.9	42.4	-14.5	30.0	43.9	-13.9	30.9	43.0	-12.1
Wrexham	25.9	37.8	-11.9	24.3	38.9	-14.6	32.3	43.7	-11.4

Dat Math D5+ Maths Dev O5+	2014			2015			2016		
	Bechgyn Boys	Merched Girls	Gwahan. Difference	Bechgyn Boys	Merched Girls	Gwahan. Difference	Bechgyn Boys	Merched Girls	Gwahan. Difference
GwE	86.9	91.1	-4.3	87.2	91.6	-4.4	87.1	92.1	-5.0
EAS	88.7	93.2	-4.5	88.6	93.0	-4.4	88.6	94.3	-5.7
ERW	86.5	93.2	-6.7	87.6	92.1	-4.5	86.6	91.3	-4.7
CSC	85.2	90.7	-5.5	87.7	92.9	-5.2	88.3	94.2	-5.9
Wales	86.3	91.2	-4.9	87.5	92.1	-4.6	87.3	92.6	-5.3

Dat Math D5+ Maths Dev O5+	2014			2015			2016		
	Bechgyn Boys	Merched Girls	Gwahan. Difference	Bechgyn Boys	Merched Girls	Gwahan. Difference	Bechgyn Boys	Merched Girls	Gwahan. Difference
Anglesey	86.2	90.4	-4.3	86.2	92.6	-6.4	85.0	91.0	-6.0
Gwynedd	87.2	92.2	-5.0	87.6	93.4	-5.9	86.9	93.7	-6.9
Conwy	88.4	90.9	-2.6	87.9	88.0	-0.1	85.9	90.1	-4.2
Denbighshire	89.5	91.9	-2.4	87.4	91.7	-4.3	86.4	94.4	-8.0
Flintshire	85.8	90.9	-5.0	87.7	92.8	-5.1	88.8	91.6	-2.8
Wrexham	85.2	90.5	-5.4	86.2	91.2	-5.0	87.5	91.6	-4.1

Dat Math D6+ Maths Dev O6+	2014			2015			2016		
	Bechgyn Boys	Merched Girls	Gwahan. Difference	Bechgyn Boys	Merched Girls	Gwahan. Difference	Bechgyn Boys	Merched Girls	Gwahan. Difference
GwE	29.8	29.8	0.0	33.3	34.3	-1.0	36.0	35.8	0.2
EAS	32.8	32.2	0.6	33.6	35.9	-2.3	37.1	38.6	-1.5
ERW	31.3	32.2	-0.9	34.7	35.2	-0.5	36.3	35.2	1.1
CSC	30.0	28.2	1.8	33.9	34.8	-0.9	37.2	37.2	0.0
Wales	30.7	29.8	0.9	33.8	34.8	-1.0	36.5	36.4	0.1

Dat Math D6+ Maths Dev O6+	2014			2015			2016		
	Bechgyn Boys	Merched Girls	Gwahan. Difference	Bechgyn Boys	Merched Girls	Gwahan. Difference	Bechgyn Boys	Merched Girls	Gwahan. Difference
Anglesey	30.1	29.0	1.1	33.8	38.3	-4.5	36.0	34.0	2.0
Gwynedd	33.2	31.9	1.3	34.7	36.9	-2.1	34.9	37.7	-2.8
Conwy	30.1	26.1	4.0	31.0	27.2	3.8	34.3	34.0	0.3
Denbighshire	24.2	28.5	-4.3	35.9	35.2	0.7	36.5	33.7	2.8
Flintshire	30.6	31.6	-1.1	33.8	34.6	-0.8	37.5	35.3	2.2
Wrexham	29.9	30.0	-0.1	31.1	34.5	-3.4	35.9	38.1	-2.2

Dat Person D5+ Person Dev O5+	2014			2015			2016		
	Bechgyn Boys	Merched Girls	Gwahan. Difference	Bechgyn Boys	Merched Girls	Gwahan. Difference	Bechgyn Boys	Merched Girls	Gwahan. Difference
GwE	91.9	97.2	-5.2	92.6	97.7	-5.1	92.1	96.9	-4.8
EAS	92.8	97.6	-4.8	93.5	97.8	-4.3	92.3	98.0	-5.7
ERW	92.2	97.6	-5.4	93.1	97.2	-4.1	92.0	96.8	-4.8
CSC	91.0	96.3	-5.3	91.9	97.6	-5.7	92.1	97.9	-5.8
Wales	91.6	96.9	-5.3	92.5	97.3	-4.8	91.9	97.2	-5.3

Dat Person D5+ Person Dev O5+	2014			2015			2016		
	Bechgyn Boys	Merched Girls	Gwahan. Difference	Bechgyn Boys	Merched Girls	Gwahan. Difference	Bechgyn Boys	Merched Girls	Gwahan. Difference
Anglesey	92.3	96.5	-4.2	92.6	98.9	-6.4	91.5	96.2	-4.7
Gwynedd	90.4	96.4	-6.0	93.4	97.7	-4.3	92.7	98.2	-5.5
Conwy	93.3	97.2	-3.8	91.7	97.6	-5.9	90.5	97.3	-6.9
Denbighshire	92.7	98.2	-5.5	93.7	98.0	-4.3	91.7	98.1	-6.5
Flintshire	93.2	97.8	-4.6	93.3	98.2	-4.9	92.8	96.4	-3.6
Wrexham	90.1	96.6	-6.5	91.2	96.6	-5.4	92.4	95.6	-3.2

Dat Person D6+ Person Dev O6+	2014			2015			2016		
	Bechgyn Boys	Merched Girls	Gwahan. Difference	Bechgyn Boys	Merched Girls	Gwahan. Difference	Bechgyn Boys	Merched Girls	Gwahan. Difference
GwE	44.0	61.9	-17.9	48.2	68.3	-20.2	52.3	71.2	-18.9
EAS	45.4	63.5	-18.1	47.2	66.6	-19.4	48.8	70.1	-21.3
ERW	45.1	63.5	-18.4	49.2	68.9	-19.7	51.1	68.1	-17.0
CSC	38.4	56.2	-17.8	43.4	62.1	-18.7	49.0	66.5	-17.5
Wales	42.6	60.7	-18.1	46.6	65.9	-19.3	50.0	68.3	-18.3

Dat Person D6+ Person Dev O6+	2014			2015			2016		
	Bechgyn Boys	Merched Girls	Gwahan. Difference	Bechgyn Boys	Merched Girls	Gwahan. Difference	Bechgyn Boys	Merched Girls	Gwahan. Difference
Anglesey	44.9	64.9	-20.0	49.5	69.7	-20.2	53.4	67.7	-14.3
Gwynedd	50.9	69.0	-18.1	55.2	75.9	-20.7	59.9	79.1	-19.3
Conwy	43.7	60.6	-16.9	51.6	68.0	-16.4	53.2	72.3	-19.1
Denbighshire	38.2	54.3	-16.2	49.5	68.4	-18.9	58.6	77.1	-18.5
Flintshire	48.9	65.6	-16.7	49.9	72.6	-22.7	48.4	67.2	-18.8
Wrexham	37.1	56.4	-19.4	37.1	58.4	-21.3	45.8	66.2	-20.4

KEY STAGE 2

Main messages

- The progress in the percentage of pupils achieving in the Core Subject Indicator [CSI] between 2014 and 2016 is higher than the progress seen on national level. However, there was less progress this year [0.6% compared to 0.9% nationally]. In 2016, the greatest progress was seen in Flintshire, with Anglesey the only authority where a decrease was seen.
- In 2016, GwE's performance in the CSI has fallen to 3rd position out of the four consortia. 3 out of the 6 authorities perform better or similarly to their FSM ranking. 2 out of the 6 authorities [Conwy and Wrexham] perform significantly lower than their expected FSM ranking.
- In 2016 on the expected levels, there is a decrease on regional level in the percentage achieving in Welsh and maths, with slight progress in English and no change in Science.
- In 2016 on the higher levels [level 6+], progress was seen in English, maths and science but only for science is this progress higher than the national progress. The region's performance on the higher levels is not as good as expected and this is an aspect that requires attention [Anglesey: Welsh and science; Conwy: English, maths and science; Denbighshire: maths and English; Flintshire: Welsh, maths and science; Wrexham: Welsh, English and maths].
- With the exception of Welsh on the expected level, the region's performance is close to or above target and projection. However, performance varies greatly on the level of individual authority. In general, more challenging targets need to be set to aim for performances that will rank the authorities similarly to or above their FSM rankings.
- Progress is seen in the percentage of FSM learners achieving in the CSI and in the 4 core subjects on the expected level. However, the performance of FSM learners on the higher levels is a matter requiring attention, with an increase in the gap between the performances of FSM and non-FSM learners in English, maths and science.
- On regional level, the difference between the performances of the genders in the CSI is slightly higher than on national level, with the greatest gap seen in Anglesey and Denbighshire. The regional gap is smaller on the higher levels for maths and science, but slightly greater for English and significantly greater for Welsh. The gap between the performances of boys and girls across the range of indicators varies greatly in the individual authorities.

Aspects that require attention

- Improve the performances of local authorities, especially on the higher levels, ensuring that each authority's performance corresponds to its FSM ranking
- Improve the performance of FSM learners, especially on the higher outcomes, closing any significant gaps between the performances of FSM and non-FSM learners
- Ensure that individual local authorities' improvement plans specifically address the underperformance of boys or girls
- Ensure an effective programme for targeting support and guidance for underperforming or 'coasting' schools
- Ensure that the targets set are challenging enough, aiming for a performance that will rank authorities similarly to or better than their FSM ranking
- Review and challenge school targets for 2017 in order to raise expectations and improve performance
- Improve access to and the use made of data, ensuring that the areas causing concern are effectively addressed on regional and local authority level
- Ensure that Senior Challenge and Support Advisers target school leaders effectively in each hub to take part in relevant leadership development programmes
- Ensure robust cluster moderation procedures in order to improve consistency and reliability of teacher assessments
- Ensure that end of KS2 teacher assessments accurately reflect the standards of individual learners
- Ensure a detailed analysis of reading/numeracy test data in order to identify specific schools
- Ensure a detailed analysis of reading/numeracy test data in order to identify specific schools where there is not a close enough correlation between performance and teacher assessments
- Ensure that processes are in place to allow effective school to school networking and collaboration, and that effective practice is cascaded and implemented across the region
- Develop a guidance and toolkit to improve provision and teaching and learning

KEY STAGE 2

Table 14: Key Stage 2 – expected level

DPC/CSI	2014		2015		2016		Cynnydd / Progress	
	%	S/R	%	S/R	%	S/R	15->16	14->16
GwE	85.7	4	88.2	2	88.8	3	0.6	3.1
EAS	87.0	2	88.1	3	89.9	1	1.8	2.9
ERW	87.3	1	88.3	1	88.0	4	-0.3	0.7
CSC	85.8	3	87.8	4	89.5	2	1.7	3.7
Wales	86.1		87.7		88.6		0.9	2.5

DPC/CSI	2014		2015		2016		Cynnydd / Progress	
	%	S/R	%	S/R	%	S/R	15->16	14->16
Anglesey (10)	87.8	7	91.8	3	89.4	9	-2.4	1.5
Gwynedd (4)	86.0	14	89.5	6	89.8	7	0.3	3.8
Conwy (8)	84.3	17	85.8	19	86.8	20	0.9	2.5
Denbighshire (14)	86.6	10	87.9	12	88.6	14	0.8	2.0
Flintshire (6)	86.1	13	87.9	11	90.1	5	2.2	4.0
Wrexham (9)	84.2	19	87.7	14	87.7	18	0.0	3.5
GwE (1)	85.7	4	88.2	2	88.8	3	0.6	3.1
Wales	86.1		87.7		88.6		0.9	2.5

* Number in brackets is the FSM ranking (1 year)

Cymraeg L4+ Welsh L4+	2014		2015		2016		Cynnydd / Progress	
	%	S/R	%	S/R	%	S/R	15->16	14->16
GwE	87.2	4	89.7	3	88.9	4	-0.9	1.7
EAS	90.0	2	90.6	2	93.1	2	2.5	3.1
ERW	87.3	3	89.5	4	90.0	3	0.5	2.7
CSC	90.6	1	93.6	1	95.1	1	1.5	4.5
Wales	88.1		90.5		90.8		0.3	2.7

Cymraeg L4+ Welsh L4+	2014		2015		2016		Cynnydd / Progress	
	%	S/R	%	S/R	%	S/R	15->16	14->16
Anglesey (10)	83.4	21	89.7	14	88.0	18	-1.7	4.5
Gwynedd (4)	88.3	15	90.4	12	89.2	16	-1.3	0.8
Conwy (8)	88.5	13	87.4	18	87.3	19	-0.2	-1.3
Denbighshire (14)	85.1	19	90.6	11	90.5	14	-0.1	5.4
Flintshire (6)	90.0	9	86.4	19	84.3	21	-2.0	-5.7
Wrexham (9)	90.4	7	88.9	15	92.5	12	3.6	2.1
GwE (1)	87.2	4	89.7	3	88.9	4	-0.9	1.7
Wales	88.1		90.5		90.8		0.3	2.7

Saesneg L4+ English L4+	2014		2015		2016		Cynnydd / Progress	
	%	S/R	%	S/R	%	S/R	15->16	14->16
GwE	88.5	3	90.0	1	90.2	3	0.1	1.7
EAS	89.3	=1	90.0	2	91.9	1	1.9	2.6
ERW	89.3	=1	89.9	3	89.9	4	0.0	0.6
CSC	88.0	4	89.8	4	91.0	2	1.2	3.0
Wales	88.4		89.6		90.3		0.7	1.9

Saesneg L4+ English L4+	2014		2015		2016		Cynnydd / Progress	
	%	S/R	%	S/R	%	S/R	15->16	14->16
Anglesey (10)	89.5	9	93.2	3	90.1	13	-3.1	0.6
Gwynedd (4)	89.2	10	90.0	10	90.9	11	0.9	1.7
Conwy (8)	87.2	17	88.5	18	88.1	20	-0.4	1.0
Denbighshire (14)	89.2	11	89.7	14	90.2	12	0.5	1.0
Flintshire (6)	89.0	12	90.1	9	91.2	6	1.1	2.2
Wrexham (9)	87.2	18	89.8	13	90.0	16	0.2	2.8
GwE (1)	88.5	3	90.0	1	90.2	3	0.1	1.7
Wales	88.4		89.6		90.3		0.7	1.9

Maths L4+	2014		2015		2016		Cynnydd / Progress	
	%	S/R	%	S/R	%	S/R	15->16	14->16
GwE	88.4	4	90.8	1	91.2	3	0.4	2.7
EAS	90.0	1	90.2	=3	91.7	=1	1.5	1.7
ERW	89.7	2	90.4	2	90.4	4	0.0	0.7
CSC	88.5	3	90.2	=3	91.7	=1	1.5	3.2
Wales	88.9		90.2		91.0		0.8	2.1

Maths L4+	2014		2015		2016		Cynnydd / Progress	
	%	S/R	%	S/R	%	S/R	15->16	14->16
Anglesey (10)	89.2	10	93.5	3	91.2	14	-2.3	2.0
Gwynedd (4)	88.6	14	91.3	6	91.5	8	0.2	3.0
Conwy (8)	87.7	17	89.5	17	90.0	18	0.6	2.3
Denbighshire (14)	89.5	9	90.2	13	91.2	13	1.1	1.7
Flintshire (6)	88.4	15	90.9	9	92.3	3	1.4	3.9
Wrexham (9)	87.7	18	90.4	12	90.3	16	-0.1	2.6
GwE (1)	88.4	4	90.8	1	91.2	3	0.4	2.7
Wales	88.9		90.2		91.0		0.8	2.1

Gwyddon L4+ Science L4+	2014		2015		2016		Cynnydd / Progress	
	%	S/R	%	S/R	%	S/R	15->16	14->16
GwE	89.9	3	92.1	1	92.1	2	0.1	2.3
EAS	91.9	1	91.9	2	93.2	1	1.3	1.3
ERW	91.1	2	91.8	3	91.2	4	-0.6	0.1
CSC	89.8	4	91.1	4	92.1	3	1.0	2.3
Wales	90.3		91.4		91.7		0.3	1.4

Gwyddon L4+ Science L4+	2014		2015		2016		Cynnydd / Progress	
	%	S/R	%	S/R	%	S/R	15->16	14->16
Anglesey (10)	90.6	12	93.9	3	92.9	6	-1.0	2.3
Gwynedd (4)	91.3	8	93.2	6	93.3	3	0.1	2.0
Conwy (8)	89.3	17	90.9	16	90.7	19	-0.2	1.3
Denbighshire (14)	90.9	10	91.2	13	92.7	10	1.5	1.8
Flintshire (6)	89.4	16	92.1	10	92.8	9	0.7	3.4
Wrexham (9)	88.4	20	91.8	12	90.8	18	-1.0	2.4
GwE (1)	89.9	3	92.1	1	92.1	2	0.1	2.3
Wales	90.3		91.4		91.7		0.3	1.4

Table 15: Key Stage 2 – expected level +1 (higher)

Cymraeg L5+ Welsh L5+	2014		2015		2016		Cynnydd / Progress	
	%	S/R	%	S/R	%	S/R	15->16	14->16
GwE	34.1	2	38.4	2	37.1	2	-1.3	3.0
EAS	32.0	4	35.8	4	36.7	3	0.9	4.7
ERW	32.3	3	35.9	3	35.7	4	-0.2	3.4
CSC	37.1	1	42.0	1	44.5	1	2.5	7.4
Wales	33.9		38.0		38.0		0.0	4.1

Cymraeg L5+ Welsh L5+	2014		2015		2016		Cynnydd / Progress	
	%	S/R	%	S/R	%	S/R	15->16	14->16
Anglesey (10)	30.1	15	38.1	10	35.3	16	-2.8	5.1
Gwynedd (4)	35.7	9	40.8	7	39.2	6	-1.6	3.5
Conwy (8)	37.0	6	37.7	11	38.1	8	0.5	1.1
Denbighshire (14)	28.9	19	33.3	17	35.5	15	2.2	6.6
Flintshire (6)	37.8	5	38.6	8	37.3	12	-1.4	-0.5
Wrexham (9)	36.0	8	30.1	20	27.0	21	-3.0	-9.0
GwE (1)	34.1	2	38.4	2	37.1	2	-1.3	3.0
Wales	33.9		38.0		38.0		0.0	4.1

Saesneg L5+ English L5+	2014		2015		2016		Cynnydd / Progress	
	%	S/R	%	S/R	%	S/R	15->16	14->16
GwE	37.6	3	40.2	4	40.8	3	0.6	3.2
EAS	40.6	1	42.6	1	44.5	1	1.9	3.9
ERW	37.9	2	40.6	3	40.4	4	-0.2	2.5
CSC	37.4	4	40.7	2	43.3	2	2.6	5.9
Wales	38.0		40.8		42.0		1.2	4.0

Saesneg L5+ English L5+	2014		2015		2016		Cynnydd / Progress	
	%	S/R	%	S/R	%	S/R	15->16	14->16
Anglesey (10)	36.8	16	42.9	7	41.1	11	-1.7	4.4
Gwynedd (4)	37.5	12	43.6	6	42.2	7	-1.4	4.7
Conwy (8)	37.8	=9	37.2	18	40.3	15	3.0	2.5
Denbighshire (14)	37.0	13	38.2	17	38.5	19	0.3	1.6
Flintshire (6)	38.9	7	41.2	8	41.7	9	0.5	2.8
Wrexham (9)	36.8	15	38.9	15	40.7	14	1.8	3.9
GwE (1)	37.6	3	40.2	4	40.8	3	0.6	3.2
Wales	38.0		40.8		42.0		1.2	4.0

Maths L5+	2014		2015		2016		Cynnydd / Progress	
	%	S/R	%	S/R	%	S/R	15->16	14->16
GwE	38.0	2	40.8	3	42.1	3	1.4	4.2
EAS	39.9	1	42.4	1	46.0	1	3.6	6.1
ERW	37.3	4	40.3	4	41.1	4	0.8	3.8
CSC	37.8	3	42.2	2	44.7	2	2.5	6.9
Wales	38.0		41.2		43.2		2.0	5.2

Maths L5+	2014		2015		2016		Cynnydd / Progress	
	%	S/R	%	S/R	%	S/R	15->16	14->16
Anglesey (10)	39.5	7	44.4	5	43.9	8	-0.6	4.3
Gwynedd (4)	37.9	11	42.2	9	45.4	5	3.1	7.5
Conwy (8)	37.2	15	39.4	16	40.1	18	0.7	2.9
Denbighshire (14)	35.8	18	37.8	18	39.4	21	1.6	3.6
Flintshire (6)	39.4	8	41.7	10	42.3	13	0.6	2.9
Wrexham (9)	37.8	=12	39.9	12	42.0	14	2.1	4.2
GwE (1)	38.0	2	40.8	3	42.1	3	1.4	4.2
Wales	38.0		41.2		43.2		2.0	5.2

Gwyddon L5+ Science L5+	2014		2015		2016		Cynnydd / Progress	
	%	S/R	%	S/R	%	S/R	15->16	14->16
GwE	38.7	2	40.8	2	42.3	3	1.5	3.6
EAS	42.1	1	44.3	1	46.6	1	2.3	4.5
ERW	37.3	=3	40.3	4	39.5	4	-0.8	2.2
CSC	37.3	=3	40.6	3	43.5	2	2.9	6.2
Wales	38.4		41.2		42.5		1.3	4.1

Gwyddon L5+ Science L5+	2014		2015		2016		Cynnydd / Progress	
	%	S/R	%	S/R	%	S/R	15->16	14->16
Anglesey (10)	38.6	12	40.9	12	40.4	15	-0.5	1.7
Gwynedd (4)	39.1	10	46.8	5	45.8	5	-1.0	6.6
Conwy (8)	36.4	17	34.8	20	39.3	16	4.5	2.9
Denbighshire (14)	39.2	9	41.4	8	41.6	13	0.3	2.4
Flintshire (6)	39.5	8	40.2	14	42.1	11	1.9	2.6
Wrexham (9)	39.0	11	41.0	=10	43.4	8	2.4	4.5
GwE (1)	38.7	2	40.8	2	42.3	3	1.5	3.6
Wales	38.4		41.2		42.5		1.3	4.1

Table 16: Key Stage 2 – performance against targets and projections

GWE

Cyfnod Allweddol 2 – Key Stage 2						
Dangosyddion Indicators	Perff 2016 Perf 2016	2015 -> 2016	Targed 2016 Target 2016	Perff v Tgd Perf v Tgt	Rhagamcan 2016 Latest Proj 2016	Perff v Rhag Perf v Proj
DPC - CSI	88.8	0.6	88.6	0.2	88.4	0.4
Cymraeg – Welsh L4+	88.9	-0.9	89.5	-0.6	90.0	-1.2
Cymraeg – Welsh L5+	37.1	-1.3	36.8	0.3	36.8	0.3
Saesneg – English L4+	90.2	0.1	89.2	1.0	89.1	1.1
Saesneg - English L5+	40.8	0.6	39.6	1.2	40.4	0.5
Mathemateg - Maths L4+	91.2	0.4	90.1	1.0	89.9	1.3
Mathemateg - Maths L5+	42.1	1.4	41.7	0.5	41.5	0.7
Gwyddoniaeth - Science L4+	92.1	0.1	91.4	0.8	91.1	1.0
Gwyddoniaeth – Science L5+	42.3	1.5	42.4	0.0	42.1	0.3

Anglesey

Cyfnod Allweddol 2 – Key Stage 2						
Dangosyddion Indicators	Perff 2016 Perf 2016	2015 -> 2016	Targed 2016 Target 2016	Perff v Tgd Perf v Tgt	Rhagamcan 2016 Latest Proj 2016	Perff v Rhag Perf v Proj
DPC - CSI	89.4	-2.4	86.7	2.7	88.0	1.4
Cymraeg – Welsh L4+	88.0	-1.7	88.7	-0.8	87.9	0.1
Cymraeg – Welsh L5+	35.3	-2.8	36.1	-0.8	38.1	-2.8
Saesneg – English L4+	90.1	-3.1	89.6	0.6	88.7	1.4
Saesneg - English L5+	41.1	-1.7	38.4	2.8	40.7	0.4
Mathemateg - Maths L4+	91.2	-2.3	88.7	2.5	88.1	3.1
Mathemateg - Maths L5+	43.9	-0.6	42.9	1.0	41.9	1.9
Gwyddoniaeth - Science L4+	92.9	-1.0	91.1	1.8	90.2	2.6
Gwyddoniaeth – Science L5+	40.4	-0.5	42.6	-2.2	39.9	0.4

Gwynedd

Cyfnod Allweddol 2 – Key Stage 2						
Dangosyddion Indicators	Perff 2016 Perf 2016	2015 -> 2016	Targed 2016 Target 2016	Perff v Tgd Perf v Tgt	Rhagamcan 2016 Latest Proj 2016	Perff v Rhag Perf v Proj
DPC - CSI	89.8	0.3	88.7	1.1	88.3	1.5
Cymraeg – Welsh L4+	89.2	-1.3	88.9	0.3	90.6	-1.5
Cymraeg – Welsh L5+	39.2	-1.6	37.4	1.8	37.2	2.0
Saesneg – English L4+	90.9	0.9	87.3	3.6	90.0	0.9
Saesneg - English L5+	42.2	-1.4	38.8	3.4	40.4	1.8
Mathemateg - Maths L4+	91.5	0.2	88.7	2.9	91.0	0.5
Mathemateg - Maths L5+	45.4	3.1	41.7	3.7	42.2	3.2
Gwyddoniaeth - Science L4+	93.3	0.1	90.1	3.2	92.9	0.4
Gwyddoniaeth – Science L5+	45.8	-1.0	43.9	1.9	43.8	1.9

Conwy

Cyfnod Allweddol 2 – Key Stage 2						
Dangosyddion Indicators	Perff 2016 Perf 2016	2015 -> 2016	Targed 2016 Target 2016	Perff v Tgd Perf v Tgt	Rhagamcan 2016 Latest Proj 2016	Perff v Rhag Perf v Proj
DPC - CSI	86.8	0.9	88.0	-1.2	86.6	0.2
Cymraeg – Welsh L4+	87.3	-0.2	90.0	-2.7	87.6	-0.3
Cymraeg – Welsh L5+	38.1	0.5	34.3	3.8	38.0	0.1
Saesneg – English L4+	88.1	-0.4	88.3	-0.1	88.5	-0.4
Saesneg - English L5+	40.3	3.0	38.1	2.2	38.9	1.4
Mathemateg - Maths L4+	90.0	0.6	89.5	0.5	89.1	1.0
Mathemateg - Maths L5+	40.1	0.7	39.3	0.8	39.2	0.9
Gwyddoniaeth - Science L4+	90.7	-0.2	91.0	-0.3	90.5	0.2
Gwyddoniaeth – Science L5+	39.3	4.5	39.7	-0.4	40.3	-1.0

Denbighshire

Cyfnod Allweddol 2 – Key Stage 2						
Dangosyddion Indicators	Perff 2016 Perf 2016	2015 -> 2016	Targed 2016 Target 2016	Perff v Tgd Perf v Tgt	Rhagamcan 2016 Latest Proj 2016	Perff v Rhag Perf v Proj
DPC - CSI	88.6	0.8	89.0	-0.4	88.1	0.5
Cymraeg – Welsh L4+	90.5	-0.1	91.7	-1.3	92.2	-1.7
Cymraeg – Welsh L5+	35.5	2.2	33.9	1.6	32.6	2.9
Saesneg – English L4+	90.2	0.5	88.2	2.1	86.4	3.8
Saesneg - English L5+	38.5	0.3	36.5	2.1	36.0	2.5
Mathemateg - Maths L4+	91.2	1.1	89.7	1.5	87.9	3.3
Mathemateg - Maths L5+	39.4	1.6	37.4	2.0	37.9	1.5
Gwyddoniaeth - Science L4+	92.7	1.5	91.4	1.3	90.1	2.6
Gwyddoniaeth – Science L5+	41.6	0.3	40.0	1.6	38.4	3.2

Flintshire

Cyfnod Allweddol 2 – Key Stage 2						
Dangosyddion Indicators	Perff 2016 Perf 2016	2015 -> 2016	Targed 2016 Target 2016	Perff v Tgd Perf v Tgt	Rhagamcan 2016 Latest Proj 2016	Perff v Rhag Perf v Proj
DPC - CSI	90.1	2.2	89.1	1.0	89.5	0.5
Cymraeg – Welsh L4+	84.3	-2.0	88.3	-4.0	89.2	-4.9
Cymraeg – Welsh L5+	37.3	-1.4	41.7	-4.5	37.3	0.0
Saesneg – English L4+	91.2	1.1	90.4	0.7	89.4	1.7
Saesneg - English L5+	41.7	0.5	41.9	-0.2	42.4	-0.8
Mathemateg - Maths L4+	92.3	1.4	90.9	1.5	90.3	2.0
Mathemateg - Maths L5+	42.3	0.6	43.5	-1.2	43.6	-1.3
Gwyddoniaeth - Science L4+	92.8	0.7	92.0	0.8	90.9	1.9
Gwyddoniaeth – Science L5+	42.1	1.9	42.8	-0.7	43.1	-1.0

Wrexham

Cyfnod Allweddol 2 – Key Stage 2						
Dangosyddion Indicators	Perff 2016 Perf 2016	2015 -> 2016	Targed 2016 Target 2016	Perff v Tgd Perf v Tgt	Rhagamcan 2016 Latest Proj 2016	Perff v Rhag Perf v Proj
DPC - CSI	87.7	0.0	88.8	-1.1	88.7	-1.0
Cymraeg – Welsh L4+	92.5	3.6	93.1	-0.6	93.1	-0.6
Cymraeg – Welsh L5+	27.0	-3.0	38.4	-11.3	34.0	-6.9
Saesneg – English L4+	90.0	0.2	90.4	-0.5	90.3	-0.3
Saesneg - English L5+	40.7	1.8	41.7	-1.0	42.0	-1.3
Mathemateg - Maths L4+	90.3	-0.1	91.8	-1.5	91.2	-0.9
Mathemateg - Maths L5+	42.0	2.1	43.9	-1.8	42.6	-0.5
Gwyddoniaeth - Science L4+	90.8	-1.0	92.0	-1.2	91.4	-0.6
Gwyddoniaeth – Science L5+	43.4	2.4	44.1	-0.7	44.2	-0.8

Table 17: Key Stage 2 - performance of FSM learners

DPC/CSI	2014			2015			2016		
	PYD FSM	Dim-PYD Non-FSM	Gwahan. Difference	PYD FSM	Dim-PYD Non-FSM	Gwahan. Difference	PYD FSM	Dim-PYD Non-FSM	Gwahan. Difference
GwE	71.1	88.7	-17.6	74.6	90.8	-16.2	76.0	91.2	-15.2
EAS									
ERW									
CSC									
Wales	71.9	89.6	-17.7	75.1	90.8	-15.7			

DPC/CSI	2014			2015			2016		
	PYD FSM	Dim-PYD Non-FSM	Gwahan. Difference	PYD FSM	Dim-PYD Non-FSM	Gwahan. Difference	PYD FSM	Dim-PYD Non-FSM	Gwahan. Difference
Anglesey	79.3	89.7	-10.4	78.7	94.6	-15.9	75.0	92.2	-17.2
Gwynedd	76.6	87.7	-11.1	75.7	91.6	-15.9	82.1	90.9	-8.8
Conwy	66.7	88.8	-22.2	69.9	89.0	-19.0	67.9	90.0	-22.1
Denbighshire	73.0	89.8	-16.8	79.0	90.0	-11.0	79.0	90.9	-11.9
Flintshire	71.6	88.5	-16.9	72.0	90.6	-18.7	82.3	91.7	-9.4
Wrexham	65.8	88.4	-22.7	74.3	90.2	-15.9	68.9	91.5	-22.6

Cymraeg L4+ Welsh L4+	2014			2015			2016		
	PYD FSM	Dim-PYD Non-FSM	Gwahan. Difference	PYD FSM	Dim-PYD Non-FSM	Gwahan. Difference	PYD FSM	Dim-PYD Non-FSM	Gwahan. Difference
GwE	72.5	89.3	-16.8	75.2	91.7	-16.5	75.9	90.4	-14.5
EAS									
ERW									
CSC									
Wales	70.5	90.3	-19.9	76.3	92.3	-16.0			

Cymraeg L4+ Welsh L4+	2014			2015			2016		
	PYD FSM	Dim-PYD Non-FSM	Gwahan. Difference	PYD FSM	Dim-PYD Non-FSM	Gwahan. Difference	PYD FSM	Dim-PYD Non-FSM	Gwahan. Difference
Anglesey	66.7	86.8	-20.2	72.2	93.1	-20.9	68.3	91.2	-22.8
Gwynedd	76.6	90.1	-13.5	76.6	92.3	-15.7	79.1	90.6	-11.5
Conwy	83.3	89.2	-5.8	66.7	89.2	-22.5	75.0	88.2	-13.2
Denbighshire	46.7	87.8	-41.1	84.6	91.0	-6.3	85.7	90.7	-5.0
Flintshire	71.4	91.6	-20.1	71.4	87.7	-16.2	85.7	84.2	1.5
Wrexham	66.7	92.2	-25.6	80.0	89.9	-9.9	63.6	94.6	-31.0

Cymraeg L5+ Welsh L5+	2014			2015			2016		
	PYD FSM	Dim-PYD Non-FSM	Gwahan. Difference	PYD FSM	Dim-PYD Non-FSM	Gwahan. Difference	PYD FSM	Dim-PYD Non-FSM	Gwahan. Difference
GwE	16.5	36.6	-20.1	13.4	41.6	-28.2	17.3	39.3	-22.0
EAS									
ERW									
CSC									
Wales	12.8	36.5	-23.8	17.3	40.6	-23.3			

Cymraeg L5+ Welsh L5+	2014			2015			2016		
	PYD FSM	Dim-PYD Non-FSM	Gwahan. Difference	PYD FSM	Dim-PYD Non-FSM	Gwahan. Difference	PYD FSM	Dim-PYD Non-FSM	Gwahan. Difference
Anglesey	12.0	33.7	-21.7	16.7	41.9	-25.2	8.3	39.4	-31.0
Gwynedd	19.5	38.3	-18.8	14.6	44.4	-29.8	20.2	41.6	-21.5
Conwy	20.8	38.9	-18.1	5.6	40.4	-34.8	18.8	39.5	-20.7
Denbighshire	0.0	31.0	-31.0	0.0	35.3	-35.3	21.4	36.6	-15.1
Flintshire	14.3	39.8	-25.5	0.0	42.0	-42.0	28.6	37.9	-9.3
Wrexham	22.2	37.1	-14.8	13.3	31.9	-18.6	18.2	27.7	-9.5

Saesneg L4+ English L4+	2014			2015			2016		
	PYD FSM	Dim-PYD Non-FSM	Gwahan. Difference	PYD FSM	Dim-PYD Non-FSM	Gwahan. Difference	PYD FSM	Dim-PYD Non-FSM	Gwahan. Difference
GwE	75.6	91.1	-15.5	78.0	92.3	-14.3	79.6	92.2	-12.6
EAS									
ERW									
CSC									
Wales	75.7	91.6	-15.9	78.2	92.3	-14.1			

Saesneg L4+ English L4+	2014			2015			2016		
	PYD FSM	Dim-PYD Non-FSM	Gwahan. Difference	PYD FSM	Dim-PYD Non-FSM	Gwahan. Difference	PYD FSM	Dim-PYD Non-FSM	Gwahan. Difference
Anglesey	81.8	91.3	-9.4	82.0	95.7	-13.7	75.0	93.1	-18.1
Gwynedd	81.0	90.5	-9.5	76.4	92.1	-15.6	82.8	92.0	-9.1
Conwy	72.3	91.1	-18.8	76.3	91.0	-14.7	71.1	91.1	-20.0
Denbighshire	78.3	91.8	-13.5	80.5	91.9	-11.4	81.4	92.3	-10.9
Flintshire	74.8	91.3	-16.6	76.7	92.4	-15.8	85.3	92.4	-7.1
Wrexham	70.8	90.9	-20.1	77.4	92.2	-14.8	77.6	92.5	-14.9

Saesneg L5+ English L5+	2014			2015			2016		
	PYD FSM	Dim-PYD Non-FSM	Gwahan. Difference	PYD FSM	Dim-PYD Non-FSM	Gwahan. Difference	PYD FSM	Dim-PYD Non-FSM	Gwahan. Difference
GwE	19.7	41.2	-21.5	21.7	43.8	-22.1	22.1	44.4	-22.3
EAS									
ERW									
CSC									
Wales	18.2	42.8	-24.6	21.9	45.2	-23.3			

Saesneg L5+ English L5+	2014			2015			2016		
	PYD FSM	Dim-PYD Non-FSM	Gwahan. Difference	PYD FSM	Dim-PYD Non-FSM	Gwahan. Difference	PYD FSM	Dim-PYD Non-FSM	Gwahan. Difference
Anglesey	20.7	40.5	-19.8	23.0	46.7	-23.8	16.3	45.9	-29.6
Gwynedd	22.8	39.9	-17.1	23.6	46.6	-23.0	21.6	44.9	-23.3
Conwy	18.3	42.8	-24.5	18.5	41.0	-22.5	21.4	43.7	-22.3
Denbighshire	23.3	40.0	-16.7	20.0	42.6	-22.6	22.4	42.5	-20.1
Flintshire	19.7	42.1	-22.4	22.6	44.5	-21.9	21.5	45.6	-24.1
Wrexham	16.0	41.4	-25.4	22.6	42.0	-19.4	25.7	43.7	-18.0

Maths L4+	2014			2015			2016		
	PYD FSM	Dim-PYD Non-FSM	Gwahan. Difference	PYD FSM	Dim-PYD Non-FSM	Gwahan. Difference	PYD FSM	Dim-PYD Non-FSM	Gwahan. Difference
GwE	76.0	91.0	-15.0	79.2	93.0	-13.8	80.5	93.2	-12.7
EAS									
ERW									
CSC									
Wales	77.3	91.8	-14.5	79.7	92.7	-13.0			

Maths L4+	2014			2015			2016		
	PYD FSM	Dim-PYD Non-FSM	Gwahan. Difference	PYD FSM	Dim-PYD Non-FSM	Gwahan. Difference	PYD FSM	Dim-PYD Non-FSM	Gwahan. Difference
Anglesey	81.0	91.1	-10.1	84.4	95.5	-11.1	77.9	93.8	-15.9
Gwynedd	80.4	90.0	-9.6	78.6	93.4	-14.8	84.3	92.4	-8.1
Conwy	71.4	91.9	-20.5	76.3	92.1	-15.8	75.5	92.5	-17.1
Denbighshire	79.9	91.8	-12.0	84.0	91.7	-7.7	84.3	92.9	-8.6
Flintshire	75.2	90.6	-15.4	76.7	93.4	-16.7	85.7	93.7	-8.1
Wrexham	72.8	91.2	-18.4	77.8	92.8	-14.9	73.9	93.6	-19.8

Maths L5+	2014			2015			2016		
	PYD FSM	Dim-PYD Non-FSM	Gwahan. Difference	PYD FSM	Dim-PYD Non-FSM	Gwahan. Difference	PYD FSM	Dim-PYD Non-FSM	Gwahan. Difference
GwE	21.0	41.4	-20.4	22.5	44.3	-21.8	23.1	45.7	-22.7
EAS									
ERW									
CSC									
Wales	19.3	42.4	-23.1	23.0	45.5	-22.6			

Maths L5+	2014			2015			2016		
	PYD FSM	Dim-PYD Non-FSM	Gwahan. Difference	PYD FSM	Dim-PYD Non-FSM	Gwahan. Difference	PYD FSM	Dim-PYD Non-FSM	Gwahan. Difference
Anglesey	22.3	43.7	-21.4	22.1	49.0	-26.8	22.1	48.1	-26.0
Gwynedd	22.2	40.3	-18.1	30.7	44.2	-13.5	25.4	48.0	-22.6
Conwy	20.7	41.4	-20.8	20.8	43.1	-22.3	18.9	44.0	-25.1
Denbighshire	24.3	38.1	-13.8	19.0	42.4	-23.4	21.9	43.8	-21.9
Flintshire	19.7	42.7	-23.0	22.2	45.2	-23.0	21.5	46.3	-24.8
Wrexham	18.7	42.1	-23.5	22.2	43.2	-21.0	27.8	44.9	-17.1

Gwyddon L4+ Science L4+	2014			2015			2016		
	PYD FSM	Dim-PYD Non-FSM	Gwahan. Difference	PYD FSM	Dim-PYD Non-FSM	Gwahan. Difference	PYD FSM	Dim-PYD Non-FSM	Gwahan. Difference
GwE	77.8	92.4	-14.6	80.6	94.3	-13.7	81.9	94.1	-12.2
EAS									
ERW									
CSC									
Wales	78.9	93.2	-14.3	81.2	93.8	-12.6			

Gwyddon L4+ Science L4+	2014			2015			2016		
	PYD FSM	Dim-PYD Non-FSM	Gwahan. Difference	PYD FSM	Dim-PYD Non-FSM	Gwahan. Difference	PYD FSM	Dim-PYD Non-FSM	Gwahan. Difference
Anglesey	81.8	92.6	-10.8	83.6	96.2	-12.6	80.8	95.3	-14.5
Gwynedd	83.5	92.8	-9.2	82.1	94.8	-12.6	85.1	94.5	-9.4
Conwy	74.6	93.1	-18.4	80.9	92.9	-11.9	74.8	93.4	-18.6
Denbighshire	82.0	93.1	-11.1	84.5	92.9	-8.4	85.7	94.4	-8.7
Flintshire	75.7	91.7	-16.0	77.0	94.7	-17.6	87.2	94.0	-6.9
Wrexham	73.5	91.9	-18.3	78.3	94.4	-16.1	76.3	93.7	-17.4

Gwyddon L5+ Science L5+	2014			2015			2016		
	PYD FSM	Dim-PYD Non-FSM	Gwahan. Difference	PYD FSM	Dim-PYD Non-FSM	Gwahan. Difference	PYD FSM	Dim-PYD Non-FSM	Gwahan. Difference
GwE	19.5	42.7	-23.3	21.3	44.6	-23.3	22.1	46.2	-24.1
EAS									
ERW									
CSC									
Wales	18.5	43.3	-24.8	21.7	45.7	-24.0			

Gwyddon L5+ Science L5+	2014			2015			2016		
	PYD FSM	Dim-PYD Non-FSM	Gwahan. Difference	PYD FSM	Dim-PYD Non-FSM	Gwahan. Difference	PYD FSM	Dim-PYD Non-FSM	Gwahan. Difference
Anglesey	18.2	43.5	-25.4	18.9	45.5	-26.6	15.4	45.2	-29.8
Gwynedd	20.9	42.1	-21.2	27.1	49.8	-22.7	23.1	48.7	-25.6
Conwy	17.4	41.3	-23.9	16.8	38.4	-21.6	15.7	43.6	-27.8
Denbighshire	25.4	42.3	-16.9	24.5	45.5	-21.0	26.7	45.4	-18.7
Flintshire	19.7	42.8	-23.1	19.1	44.0	-24.9	19.6	46.5	-26.9
Wrexham	16.3	44.1	-27.8	22.2	44.6	-22.4	27.4	46.7	-19.3

Table 18: Key Stage 2 – difference between the genders

DPC/CSI	2014			2015			2016		
	Bechgyn Boys	Merched Girls	Gwahan. Difference	Bechgyn Boys	Merched Girls	Gwahan. Difference	Bechgyn Boys	Merched Girls	Gwahan. Difference
GwE	82.5	89.1	-6.6	85.5	91.1	-5.7	86.0	91.7	-5.7
EAS	84.0	90.3	-6.3	84.6	91.9	-7.3	88.1	91.7	-3.6
ERW	83.8	90.3	-6.5	85.5	91.2	-5.7	85.6	90.5	-4.9
CSC	83.1	88.5	-5.4	85.1	90.6	-5.5	86.5	92.5	-6.0
Wales	83.1	89.4	-6.3	84.9	90.7	-5.8	86.1	91.3	-5.2

DPC/CSI	2014			2015			2016		
	Bechgyn Boys	Merched Girls	Gwahan. Difference	Bechgyn Boys	Merched Girls	Gwahan. Difference	Bechgyn Boys	Merched Girls	Gwahan. Difference
Anglesey	86.5	89.3	-2.7	91.8	91.8	-0.1	85.8	93.3	-7.5
Gwynedd	82.0	90.5	-8.5	85.4	94.2	-8.8	87.9	91.6	-3.7
Conwy	80.1	88.7	-8.6	82.2	89.8	-7.6	83.8	90.2	-6.4
Denbighshire	84.2	89.3	-5.1	85.8	90.2	-4.4	85.0	92.5	-7.5
Flintshire	83.4	88.9	-5.5	85.0	90.9	-5.9	87.9	92.3	-4.3
Wrexham	80.5	88.2	-7.7	85.1	90.3	-5.2	84.9	90.7	-5.8

Cymraeg L4+ Welsh L4+	2014			2015			2016		
	Bechgyn Boys	Merched Girls	Gwahan. Difference	Bechgyn Boys	Merched Girls	Gwahan. Difference	Bechgyn Boys	Merched Girls	Gwahan. Difference
GwE	82.8	91.9	-9.0	87.1	92.6	-5.5	85.5	92.2	-6.7
EAS	84.6	95.7	-11.1	88.1	93.1	-5.0	91.1	95.1	-4.0
ERW	82.0	95.7	-13.7	85.5	93.6	-8.1	87.6	92.3	-4.7
CSC	88.4	92.6	-4.2	92.2	94.8	-2.6	93.1	97.1	-4.0
Wales	83.8	92.3	-8.5	87.5	93.5	-6.0	88.2	93.4	-5.2

Cymraeg L4+ Welsh L4+	2014			2015			2016		
	Bechgyn Boys	Merched Girls	Gwahan. Difference	Bechgyn Boys	Merched Girls	Gwahan. Difference	Bechgyn Boys	Merched Girls	Gwahan. Difference
Anglesey	78.9	88.4	-9.6	87.8	91.8	-4.0	83.7	93.2	-9.5
Gwynedd	84.5	92.6	-8.1	87.1	94.1	-7.0	85.9	92.3	-6.4
Conwy	79.8	95.9	-16.1	86.7	88.3	-1.6	84.3	90.2	-5.9
Denbighshire	80.7	89.5	-8.8	88.1	93.1	-5.0	86.4	94.7	-8.2
Flintshire	88.1	91.7	-3.6	81.8	90.9	-9.1	80.0	88.5	-8.5
Wrexham	87.0	94.6	-7.7	86.8	90.9	-4.1	94.0	91.3	2.7

Cymraeg L5+ Welsh L5+	2014			2015			2016		
	Bechgyn Boys	Merched Girls	Gwahan. Difference	Bechgyn Boys	Merched Girls	Gwahan. Difference	Bechgyn Boys	Merched Girls	Gwahan. Difference
GwE	28.2	40.3	-12.1	32.8	44.5	-11.6	31.5	42.5	-11.0
EAS	26.3	37.9	-11.6	27.0	44.5	-17.5	27.3	46.2	-18.9
ERW	23.9	37.9	-14.0	29.8	42.1	-12.3	27.0	44.2	-17.2
CSC	31.5	42.2	-10.7	35.2	48.0	-12.8	39.0	49.9	-10.9
Wales	27.2	40.5	-13.3	31.7	44.3	-12.6	31.1	44.9	-13.8

Cymraeg L5+ Welsh L5+	2014			2015			2016		
	Bechgyn Boys	Merched Girls	Gwahan. Difference	Bechgyn Boys	Merched Girls	Gwahan. Difference	Bechgyn Boys	Merched Girls	Gwahan. Difference
Anglesey	24.4	36.4	-12.1	30.9	46.1	-15.2	26.6	45.7	-19.0
Gwynedd	29.9	42.0	-12.2	35.8	46.5	-10.7	33.5	44.6	-11.1
Conwy	32.7	40.7	-8.0	36.7	38.7	-2.1	35.5	40.7	-5.1
Denbighshire	25.4	32.5	-7.0	28.0	38.8	-10.8	30.5	40.7	-10.2
Flintshire	26.2	47.9	-21.7	27.3	50.0	-22.7	30.0	44.2	-14.2
Wrexham	26.1	48.2	-22.1	21.1	39.0	-17.9	29.9	25.0	4.9

Saesneg L4+ English L4+	2014			2015			2016		
	Bechgyn Boys	Merched Girls	Gwahan. Difference	Bechgyn Boys	Merched Girls	Gwahan. Difference	Bechgyn Boys	Merched Girls	Gwahan. Difference
GwE	84.7	92.5	-7.8	87.3	93.0	-5.7	87.1	93.4	-6.3
EAS	86.0	92.7	-6.7	86.5	93.8	-7.3	90.0	93.9	-3.9
ERW	85.6	92.7	-7.1	86.9	93.1	-6.2	87.3	92.7	-5.4
CSC	85.0	91.1	-6.1	86.9	92.8	-5.9	87.8	94.2	-6.4
Wales	85.0	92.0	-7.0	86.6	92.8	-6.2	87.6	93.2	-5.6

Saesneg L4+ English L4+	2014			2015			2016		
	Bechgyn Boys	Merched Girls	Gwahan. Difference	Bechgyn Boys	Merched Girls	Gwahan. Difference	Bechgyn Boys	Merched Girls	Gwahan. Difference
Anglesey	87.4	91.9	-4.5	91.5	95.2	-3.7	86.1	94.6	-8.5
Gwynedd	85.8	92.9	-7.1	86.2	94.4	-8.2	88.9	92.7	-3.8
Conwy	81.8	93.0	-11.2	85.2	92.1	-6.9	84.5	92.4	-7.9
Denbighshire	86.7	92.2	-5.5	86.7	93.2	-6.4	86.3	94.4	-8.1
Flintshire	85.2	93.0	-7.8	87.6	92.7	-5.1	88.8	93.6	-4.8
Wrexham	83.0	91.8	-8.8	87.8	91.9	-4.0	87.0	93.2	-6.3

Saesneg L5+ English L5+	2014			2015			2016		
	Bechgyn Boys	Merched Girls	Gwahan. Difference	Bechgyn Boys	Merched Girls	Gwahan. Difference	Bechgyn Boys	Merched Girls	Gwahan. Difference
GwE	31.9	43.8	-11.9	33.7	47.4	-13.7	34.6	47.3	-12.7
EAS	35.2	46.4	-11.2	36.0	49.9	-13.9	39.0	50.2	-11.2
ERW	30.9	46.4	-15.5	34.8	46.6	-11.8	34.8	46.4	-11.6
CSC	32.5	42.3	-9.8	34.4	47.2	-12.8	37.2	49.6	-12.4
Wales	32.3	44.0	-11.7	34.5	47.4	-12.9	36.1	48.1	-12.0

Saesneg L5+ English L5+	2014			2015			2016		
	Bechgyn Boys	Merched Girls	Gwahan. Difference	Bechgyn Boys	Merched Girls	Gwahan. Difference	Bechgyn Boys	Merched Girls	Gwahan. Difference
Anglesey	30.4	43.8	-13.4	36.4	50.2	-13.7	36.2	46.5	-10.3
Gwynedd	34.5	40.9	-6.5	37.7	50.3	-12.6	36.4	47.7	-11.3
Conwy	31.2	44.9	-13.6	32.3	42.6	-10.3	35.4	46.0	-10.6
Denbighshire	35.1	39.1	-4.0	32.9	44.4	-11.5	29.4	48.3	-18.8
Flintshire	31.4	46.6	-15.2	33.1	49.7	-16.6	35.6	47.8	-12.2
Wrexham	29.1	45.2	-16.2	31.4	46.6	-15.2	34.7	47.1	-12.4

Maths L4+	2014			2015			2016		
	Bechgyn Boys	Merched Girls	Gwahan. Difference	Bechgyn Boys	Merched Girls	Gwahan. Difference	Bechgyn Boys	Merched Girls	Gwahan. Difference
GwE	86.4	90.6	-4.2	89.2	92.5	-3.3	89.5	92.9	-3.3
EAS	88.4	91.7	-3.3	87.8	92.9	-5.1	90.5	93.0	-2.5
ERW	87.6	91.7	-4.1	88.8	92.1	-3.3	89.0	91.8	-2.8
CSC	86.9	90.2	-3.3	88.4	92.1	-3.7	89.7	93.7	-4.0
Wales	87.1	90.9	-3.8	88.4	92.1	-3.7	89.4	92.6	-3.2

Maths L4+	2014			2015			2016		
	Bechgyn Boys	Merched Girls	Gwahan. Difference	Bechgyn Boys	Merched Girls	Gwahan. Difference	Bechgyn Boys	Merched Girls	Gwahan. Difference
Anglesey	88.6	89.9	-1.3	94.1	92.7	1.4	88.7	93.9	-5.3
Gwynedd	85.7	91.7	-6.0	88.5	94.6	-6.1	90.0	93.0	-3.1
Conwy	85.0	90.7	-5.7	87.6	91.5	-4.0	88.4	92.0	-3.6
Denbighshire	88.0	91.3	-3.3	89.7	90.7	-0.9	89.0	93.7	-4.7
Flintshire	87.0	89.8	-2.8	89.2	92.7	-3.5	91.6	93.1	-1.5
Wrexham	85.4	90.3	-4.9	88.3	92.6	-4.3	88.6	92.1	-3.5

Maths L5+	2014			2015			2016		
	Bechgyn Boys	Merched Girls	Gwahan. Difference	Bechgyn Boys	Merched Girls	Gwahan. Difference	Bechgyn Boys	Merched Girls	Gwahan. Difference
GwE	38.4	37.5	1.0	41.1	40.4	0.7	42.4	41.9	0.5
EAS	39.6	40.5	-0.9	41.2	43.7	-2.5	46.4	45.5	0.9
ERW	36.9	40.5	-3.6	40.6	40.0	0.6	41.6	40.5	1.1
CSC	38.4	37.2	1.2	41.6	42.9	-1.3	45.0	44.4	0.6
Wales	38.1	37.8	0.3	41.0	41.5	-0.5	43.5	42.8	0.7

Maths L5+	2014			2015			2016		
	Bechgyn Boys	Merched Girls	Gwahan. Difference	Bechgyn Boys	Merched Girls	Gwahan. Difference	Bechgyn Boys	Merched Girls	Gwahan. Difference
Anglesey	40.4	38.6	1.7	45.7	42.9	2.8	44.3	43.3	1.0
Gwynedd	39.3	36.3	3.0	41.6	43.0	-1.4	46.1	44.7	1.4
Conwy	38.4	35.9	2.5	41.4	37.2	4.3	41.1	38.9	2.1
Denbighshire	38.6	32.4	6.3	35.9	40.0	-4.1	38.3	40.6	-2.3
Flintshire	37.9	41.0	-3.2	41.2	42.2	-1.0	43.2	41.4	1.8
Wrexham	37.3	38.4	-1.1	41.9	37.8	4.1	41.7	42.4	-0.7

Gwyddon L4+ Science L4+	2014			2015			2016		
	Bechgyn Boys	Merched Girls	Gwahan. Difference	Bechgyn Boys	Merched Girls	Gwahan. Difference	Bechgyn Boys	Merched Girls	Gwahan. Difference
GwE	87.9	92.1	-4.2	90.5	93.8	-3.2	90.3	94.1	-3.8
EAS	90.0	94.0	-4.0	89.5	94.6	-5.1	91.9	94.6	-2.7
ERW	88.9	94.0	-5.1	89.9	93.8	-3.9	89.7	92.7	-3.0
CSC	87.8	91.8	-4.0	89.4	92.8	-3.4	89.9	94.4	-4.5
Wales	88.3	92.5	-4.2	89.6	93.3	-3.7	90.0	93.6	-3.6

Gwyddon L4+ Science L4+	2014			2015			2016		
	Bechgyn Boys	Merched Girls	Gwahan. Difference	Bechgyn Boys	Merched Girls	Gwahan. Difference	Bechgyn Boys	Merched Girls	Gwahan. Difference
Anglesey	90.1	91.2	-1.2	93.9	94.0	-0.1	89.6	96.5	-6.9
Gwynedd	90.2	92.6	-2.4	90.8	95.9	-5.1	92.0	94.5	-2.5
Conwy	87.0	91.8	-4.8	89.0	92.9	-3.9	88.0	93.7	-5.7
Denbighshire	88.9	93.3	-4.3	90.3	92.3	-2.1	91.3	94.2	-2.9
Flintshire	86.8	92.2	-5.4	90.4	93.8	-3.4	91.3	94.3	-3.0
Wrexham	85.9	91.2	-5.2	90.0	93.7	-3.7	89.2	92.5	-3.4

Gwyddon L5+ Science L5+	2014			2015			2016		
	Bechgyn Boys	Merched Girls	Gwahan. Difference	Bechgyn Boys	Merched Girls	Gwahan. Difference	Bechgyn Boys	Merched Girls	Gwahan. Difference
GwE	37.7	39.9	-2.2	39.9	41.9	-2.0	40.8	44.0	-3.2
EAS	39.8	44.6	-4.8	41.3	47.7	-6.4	45.0	48.2	-3.2
ERW	35.7	44.6	-8.9	39.1	41.6	-2.5	38.1	40.9	-2.8
CSC	36.3	38.4	-2.1	38.3	42.9	-4.6	41.1	45.9	-4.8
Wales	36.9	39.9	-3.0	39.4	43.1	-3.7	40.7	44.3	-3.6

Gwyddon L5+ Science L5+	2014			2015			2016		
	Bechgyn Boys	Merched Girls	Gwahan. Difference	Bechgyn Boys	Merched Girls	Gwahan. Difference	Bechgyn Boys	Merched Girls	Gwahan. Difference
Anglesey	39.2	38.0	1.2	41.0	40.8	0.2	37.4	43.6	-6.2
Gwynedd	39.5	38.8	0.7	44.6	49.3	-4.8	45.4	46.1	-0.7
Conwy	36.5	36.3	0.2	35.9	33.7	2.1	39.6	38.9	0.6
Denbighshire	40.0	38.3	1.7	39.6	43.4	-3.7	37.9	45.6	-7.7
Flintshire	36.2	43.0	-6.7	38.7	41.7	-3.0	40.6	43.6	-3.0
Wrexham	36.2	42.0	-5.8	40.2	41.9	-1.7	41.9	45.0	-3.1

KEY STAGE 3

Main messages

- In 2016, further progress was seen in the percentage of pupils achieving in the Core Subject Indicator [CSI]. The region's performance continues to be the best out of the four consortia with each authority except Wrexham performing better than or similarly to their FSM ranking.
- In 2016 on the expected level, the region's performance is the highest in each of the core subjects despite a slight decrease in the percentage achieving in Welsh.
- In 2016 on the higher levels [level 6+], progress is seen in each of the core subjects. The regional progress is higher than the national progress for Welsh, but lower for the other core subjects. Performance in maths is the best out of the four consortia, with the other three core subjects second best. The authorities' performances are better or similar to their FSM rankings with the exception of: Anglesey in science; Gwynedd in Welsh [where numbers following Welsh Language are significantly higher than other authorities on national level]; Flintshire in science and Wrexham in English, maths and science.
- The region's performance is close to or above target on the expected level. However, performance on the higher levels is generally below target especially in the language subjects.
- Significant progress is seen in the percentage of FSM pupils achieving in the CSI. Progress is also seen in each of the 4 core subjects on the expected and higher levels. However, further attention is required to improve the performance of FSM learners in particular authorities where performance has fallen in some of the core subjects.
- In 2016 on regional level, the difference between the performances of the genders in the CSI is lower than the difference seen on national level. The greatest gap continues in Anglesey. The gap is smaller on regional level for the four core subjects on the expected level. On the higher levels, the regional gap is greater than the national gap for Welsh, English and maths, with science the only subject where the gap is smaller. The gap between the performances of boys and girls across the range of indicators on the higher levels varies significantly in the individual authorities.

Aspects that require attention

- Continue to improve performance on the higher levels, especially boys' performance
- Improve the performance of FSM learners in the authorities where performance has fallen this year in specific core subjects
- Ensure that individual local authorities' improvement plans specifically address the underperformance of boys or girls, especially on the higher levels
- Target schools where end of KS3 assessments and KS4 performance are not coherently aligned
- Ensure an effective programme for targeting support and guidance for underperforming or 'coasting' schools
- Ensure robust cluster moderation procedures in order to improve consistency and reliability of teacher assessments
- Ensure that processes are in place to allow effective school to school networking and collaboration, and that effective practice is cascaded and implemented across the region
- Develop a guidance and toolkit to improve provision and teaching and learning

KEY STAGE 3

Table 19: Key Stage 3 – expected level

DCS/FPI	2014		2015		2016		Cynnydd / Progress	
	%	S/R	%	S/R	%	S/R	15->16	14->16
GwE	83.8	1	86.1	1	87.8	1	1.7	4.0
EAS	79.0	4	82.2	4	83.8	4	1.6	4.8
ERW	81.7	2	84.3	2	85.6	3	1.3	3.9
CSC	80.3	3	83.6	3	86.7	2	3.1	6.4
Wales	81.0		83.9		85.9		2.0	4.9

DPC/CSI	2014		2015		2016		Cynnydd / Progress	
	%	S/R	%	S/R	%	S/R	15->16	14->16
Anglesey (10)	83.6	9	84.5	9	87.6	7	3.0	4.0
Gwynedd (4)	89.1	1	91.3	1	92.0	2	0.7	2.9
Conwy (8)	83.7	8	87.2	6	87.3	9	0.1	3.7
Denbighshire (14)	83.2	10	84.3	12	86.4	12	2.2	3.2
Flintshire (6)	84.3	5	87.1	7	88.4	6	1.3	4.1
Wrexham (9)	78.4	16	80.9	19	84.3	16	3.4	5.9
GwE (1)	83.8	1	86.1	1	87.8	1	1.7	4.0
Wales	81.0		83.9		85.9		2.0	4.9

* Number in brackets is the FSM ranking (1 year)

Performance against Welsh Government benchmarks [expected performance modelled on the basis of FSM eligibility]									
DPC/CSI	2014			2015			2016		
	Gwir Actual	Meincnod Benchmark	Gwahan. Difference	Gwir Actual	Meincnod Benchmark	Gwahan. Difference	Gwir Actual	Meincnod Benchmark	Gwahan. Difference
Anglesey	84.8	82.8	2.0	85.5	85.1	0.4			
Gwynedd	90.0	86.2	3.8	92.3	89.1	3.2			
Conwy	85.1	82.9	2.2	88.0	86.0	2.0			
Denbighshire	84.2	83.2	1.1	85.8	85.9	-0.1			
Flintshire	85.8	86.2	-0.4	88.2	89.0	-0.8			
Wrexham	80.8	83.1	-2.3	83.4	86.4	-3.0			

Cymraeg L5+ Welsh L5+	2014		2015		2016		Cynnydd / Progress	
	%	S/R	%	S/R	%	S/R	15->16	14->16
GwE	89.9	3	92.3	1	92.9	1	0.5	3.0
EAS	88.7	4	88.2	4	87.4	4	-0.8	-1.3
ERW	90.0	2	89.2	3	91.9	3	2.7	1.9
CSC	91.1	1	92.0	2	92.6	2	0.6	1.5
Wales	90.1		90.9		92.0		1.1	1.9

Cymraeg L5+ Welsh L5+	2014		2015		2016		Cynnydd / Progress	
	%	S/R	%	S/R	%	S/R	15->16	14->16
Anglesey (10)	89.2	12/18	93.2	3/18	92.1	12	-1.1	2.9
Gwynedd (4)	91.6	6/18	93.0	5/18	92.3	10	-0.7	0.7
Conwy (8)	92.0	4/18	91.5	10/18	93.5	7	2.0	1.4
Denbighshire (14)	91.6	7/18	92.5	7/18	92.5	9	0.0	0.9
Flintshire (6)	56.0	18/18	80.0	18/18	96.8	4	16.8	40.8
Wrexham (9)	91.7	5/18	93.9	2/18	97.5	2	3.6	5.8
GwE (1)	89.9	3	92.3	1	92.9	1	0.5	3.0
Wales	90.1		90.9		92.0		1.1	1.9

Saesneg L5+ English L5+	2014		2015		2016		Cynnydd / Progress	
	%	S/R	%	S/R	%	S/R	15->16	14->16
GwE	88.3	1	89.5	1	90.4	1	0.9	2.1
EAS	84.6	4	86.5	4	87.5	4	1.0	2.9
ERW	86.3	2	88.4	2	89.3	3	0.9	3.0
CSC	85.2	3	87.7	3	90.0	2	2.3	4.8
Wales	85.9		87.9		89.2		1.3	3.3

Saesneg L5+ English L5+	2014		2015		2016		Cynnydd / Progress	
	%	S/R	%	S/R	%	S/R	15->16	14->16
Anglesey (10)	87.9	11	87.9	11	90.5	9	2.6	2.5
Gwynedd (4)	90.6	1	91.3	7	92.5	5	1.2	1.9
Conwy (8)	88.7	7	91.4	6	90.9	7	-0.5	2.2
Denbighshire (14)	88.5	8	87.8	12	89.5	13	1.7	1.0
Flintshire (6)	89.4	4	91.4	5	91.1	6	-0.3	1.7
Wrexham (9)	84.6	16	86.1	18	87.9	16	1.8	3.3
GwE (1)	88.3	1	89.5	1	90.4	1	0.9	2.1
Wales	85.9		87.9		89.2		1.3	3.3

Maths L5+	2014		2015		2016		Cynnydd / Progress	
	%	S/R	%	S/R	%	S/R	15->16	14->16
GwE	88.5	1	90.4	1	91.5	1	1.2	3.1
EAS	84.7	4	87.0	4	89.0	4	2.0	4.3
ERW	86.9	2	88.7	=2	89.5	3	0.8	2.6
CSC	86.1	3	88.7	=2	90.5	2	1.8	4.4
Wales	86.5		88.7		90.1		1.4	3.6

Maths L5+	2014		2015		2016		Cynnydd / Progress	
	%	S/R	%	S/R	%	S/R	15->16	14->16
Anglesey (10)	87.1	13	88.9	11	90.8	10	1.8	3.6
Gwynedd (4)	91.9	1	93.4	1	94.0	2	0.6	2.1
Conwy (8)	89.1	4	91.1	7	92.2	6	1.1	3.1
Denbighshire (14)	88.8	6	89.7	9	90.9	8	1.2	2.2
Flintshire (6)	88.7	7	92.0	3	92.7	5	0.7	4.0
Wrexham (9)	84.7	15	85.9	20	87.9	19	2.1	3.2
GwE (1)	88.5	1	90.4	1	91.5	1	1.2	3.1
Wales	86.5		88.7		90.1		1.4	3.6

Gwyddon L5+ Science L5+	2014		2015		2016		Cynnydd / Progress	
	%	S/R	%	S/R	%	S/R	15->16	14->16
GwE	92.1	1	93.7	1	94.2	1	0.5	2.1
EAS	89.7	4	91.0	4	91.5	4	0.5	1.8
ERW	90.3	2	91.4	3	92.5	3	1.1	2.2
CSC	90.0	3	91.6	2	93.3	2	1.7	3.3
Wales	90.4		91.8		92.8		1.0	2.4

Gwyddon L5+ Science L5+	2014		2015		2016		Cynnydd / Progress	
	%	S/R	%	S/R	%	S/R	15->16	14->16
Anglesey (10)	91.3	10	92.6	9	94.1	8	1.5	2.8
Gwynedd (4)	93.9	2	95.9	2	96.0	1	0.1	2.1
Conwy (8)	93.7	3	94.9	3	95.2	4	0.3	1.5
Denbighshire (14)	93.5	4	93.1	8	93.1	12	0.0	-0.4
Flintshire (6)	91.3	9	94.3	6	94.8	7	0.5	3.4
Wrexham (9)	89.2	16	90.6	17	91.9	16	1.3	2.7
GwE (1)	92.1	1	93.7	1	94.2	1	0.5	2.1
Wales	90.4		91.8		92.8		1.0	2.4

Table 20: Key Stage 3 – expected level +1 (higher)

Cymraeg L6+ Welsh L6+	2014		2015		2016		Cynnydd / Progress	
	%	S/R	%	S/R	%	S/R	15->16	14->16
GwE	55.2	1	59.8	1	61.3	2	1.6	6.1
EAS	51.1	3	51.8	=3	51.7	3	-0.1	0.6
ERW	50.1	4	51.8	=3	51.1	4	-0.7	1.0
CSC	54.0	2	58.2	2	63.1	1	4.9	9.1
Wales	53.0		56.1		57.2		1.1	4.2

Cymraeg L6+ Welsh L6+	2014		2015		2016		Cynnydd / Progress	
	%	S/R	%	S/R	%	S/R	15->16	14->16
Anglesey (10)	54.3	6	62.4	2	66.5	3	4.1	12.2
Gwynedd (4)	56.2	=3	61.6	=6	60.7	8	-1.0	4.5
Conwy (8)	63.2	1	56.1	10	57.9	10	1.9	-5.2
Denbighshire (14)	52.9	11	58.3	9	47.3	16	-10.9	-5.5
Flintshire (6)	36.0	18	36.7	18	63.5	4	26.8	27.5
Wrexham (9)	53.3	8	61.7	5	79.0	1	17.3	25.7
GwE (1)	55.2	1	59.8	1	61.3	2	1.6	6.1
Wales	53.0		56.1		57.2		1.1	4.2

Saesneg L6+ English L6+	2014		2015		2016		Cynnydd / Progress	
	%	S/R	%	S/R	%	S/R	15->16	14->16
GwE	50.6	1	54.5	1	57.7	2	3.2	7.2
EAS	45.8	4	51.5	4	52.9	4	1.4	7.1
ERW	48.7	3	51.6	3	55.6	3	4.0	6.9
CSC	49.1	2	53.4	2	58.2	1	4.8	9.1
Wales	48.5		52.6		56.2		3.6	7.7

Saesneg L6+ English L6+	2014		2015		2016		Cynnydd / Progress	
	%	S/R	%	S/R	%	S/R	15->16	14->16
Anglesey (10)	47.7	14	55.9	8	56.7	10	0.8	9.0
Gwynedd (4)	52.9	6	57.3	6	65.3	4	7.9	12.3
Conwy (8)	54.1	5	58.2	5	57.4	8	-0.9	3.2
Denbighshire (14)	48.8	11	48.8	17	54.7	14	5.8	5.8
Flintshire (6)	54.7	4	60.3	4	61.2	7	0.9	6.5
Wrexham (9)	42.8	18	45.3	19	49.3	18	3.9	6.5
GwE (1)	50.6	1	54.5	1	57.7	2	3.2	7.2
Wales	48.5		52.6		56.2		3.6	7.7

Maths L6+	2014		2015		2016		Cynnydd / Progress	
	%	S/R	%	S/R	%	S/R	15->16	14->16
GwE	59.3	1	62.1	1	64.4	1	2.3	5.1
EAS	52.0	4	56.9	4	60.2	4	3.3	8.2
ERW	57.5	2	59.5	3	62.1	3	2.6	4.6
CSC	55.7	3	59.6	2	64.0	2	4.4	8.3
Wales	56.2		59.6		62.7		3.1	6.5

Maths L6+	2014		2015		2016		Cynnydd / Progress	
	%	S/R	%	S/R	%	S/R	15->16	14->16
Anglesey (10)	58.4	10	58.9	11	63.4	11	4.4	5.0
Gwynedd (4)	64.9	2	67.3	3	70.6	4	3.3	5.7
Conwy (8)	60.8	7	63.8	7	64.9	8	1.1	4.1
Denbighshire (14)	58.7	9	60.1	10	62.5	13	2.5	3.8
Flintshire (6)	60.9	6	65.8	5	67.1	6	1.3	6.2
Wrexham (9)	51.4	18	54.1	18	56.3	19	2.2	4.9
GwE (1)	59.3	1	62.1	1	64.4	1	2.3	5.1
Wales	56.2		59.6		62.7		3.1	6.5

Gwyddon L6+ Science L6+	2014		2015		2016		Cynnydd / Progress	
	%	S/R	%	S/R	%	S/R	15->16	14->16
GwE	57.3	1	60.3	2	63.8	2	3.6	6.6
EAS	49.8	4	54.4	4	59.8	4	5.4	10.0
ERW	53.6	3	56.9	3	61.6	3	4.7	8.0
CSC	57.1	2	61.8	1	65.9	1	4.1	8.8
Wales	54.6		58.6		62.9		4.3	8.3

Gwyddon L6+ Science L6+	2014		2015		2016		Cynnydd / Progress	
	%	S/R	%	S/R	%	S/R	15->16	14->16
Anglesey (10)	53.9	14	56.2	14	62.0	13	5.8	8.2
Gwynedd (4)	64.4	1	68.6	2	70.5	4	1.9	6.1
Conwy (8)	60.6	6	62.7	6	65.4	9	2.7	4.8
Denbighshire (14)	50.5	15	58.0	13	60.8	14	2.8	10.2
Flintshire (6)	62.0	2	62.3	7	64.6	10	2.3	2.5
Wrexham (9)	48.5	18	51.2	19	58.8	17	7.6	10.3
GwE (1)	57.3	1	60.3	2	63.8	2	3.6	6.6
Wales	54.6		58.6		62.9		4.3	8.3

Table 21: Key Stage 3 – performance against targets and projections

GWE

Cyfnod Allweddol 3 – Key Stage 3						
Dangosyddion Indicators	Perff 2016 Perf 2016	2015 -> 2016	Targed 2016 Target 2016	Perff v Tgd Perf v Tgt	Rhagamcan 2016 Latest Proj 2016	Perff v Rhag Perf v Proj
DPC - CSI	87.8	1.7	88.2	-0.4	84.8	2.9
Cymraeg – Welsh L5+	92.9	0.5	93.2	-0.3	93.1	-0.2
Cymraeg – Welsh L6+	61.3	1.6	65.5	-4.2	63.4	-2.1
Saesneg – English L5+	90.4	0.9	89.5	0.9	87.7	2.8
Saesneg - English L6+	57.7	3.2	60.7	-3.0	56.6	1.2
Mathemateg - Maths L5+	91.5	1.2	91.2	0.3	88.6	2.9
Mathemateg - Maths L6+	64.4	2.3	65.6	-1.2	62.4	2.0
Gwyddoniaeth - Science L5+	94.2	0.5	93.7	0.5	91.1	3.2
Gwyddoniaeth – Science L6+	63.8	3.6	66.1	-2.2	61.0	2.9

Anglesey

Cyfnod Allweddol 3 – Key Stage 3						
Dangosyddion Indicators	Perff 2016 Perf 2016	2015 -> 2016	Targed 2016 Target 2016	Perff v Tgd Perf v Tgt	Rhagamcan 2016 Latest Proj 2016	Perff v Rhag Perf v Proj
DPC - CSI	87.6	3.0	85.7	1.9	83.2	4.4
Cymraeg – Welsh L5+	92.1	-1.1	92.2	-0.1	90.7	1.4
Cymraeg – Welsh L6+	66.5	4.1	77.4	-10.9	65.8	0.7
Saesneg – English L5+	90.5	2.6	79.4	11.0	89.0	1.5
Saesneg - English L6+	56.7	0.8	66.3	-9.5	59.4	-2.6
Mathemateg - Maths L5+	90.8	1.8	90.1	0.7	86.7	4.1
Mathemateg - Maths L6+	63.4	4.4	66.4	-3.0	60.6	2.8
Gwyddoniaeth - Science L5+	94.1	1.5	92.5	1.6	89.4	4.7
Gwyddoniaeth – Science L6+	62.0	5.8	60.4	1.7	64.4	-2.3

Gwynedd

Cyfnod Allweddol 3 – Key Stage 3						
Dangosyddion Indicators	Perff 2016 Perf 2016	2015 -> 2016	Targed 2016 Target 2016	Perff v Tgd Perf v Tgt	Rhagamcan 2016 Latest Proj 2016	Perff v Rhag Perf v Proj
DPC - CSI	92.0	0.7	92.1	-0.1	91.9	0.2
Cymraeg – Welsh L5+	92.3	-0.7	92.6	-0.2	94.9	-2.6
Cymraeg – Welsh L6+	60.7	-1.0	61.3	-0.6	66.2	-5.5
Saesneg – English L5+	92.5	1.2	91.1	1.4	92.3	0.2
Saesneg - English L6+	65.3	7.9	63.0	2.3	66.6	-1.3
Mathemateg - Maths L5+	94.0	0.6	92.7	1.3	94.1	-0.1
Mathemateg - Maths L6+	70.6	3.3	69.8	0.8	71.0	-0.3
Gwyddoniaeth - Science L5+	96.0	0.1	94.4	1.7	95.5	0.5
Gwyddoniaeth – Science L6+	70.5	1.9	69.5	1.1	71.6	-1.0

Conwy

Cyfnod Allweddol 3 – Key Stage 3						
Dangosyddion Indicators	Perff 2016 Perf 2016	2015 -> 2016	Targed 2016 Target 2016	Perff v Tgd Perf v Tgt	Rhagamcan 2016 Latest Proj 2016	Perff v Rhag Perf v Proj
DPC - CSI	87.3	0.1	88.0	-0.7	79.7	7.6
Cymraeg – Welsh L5+	93.5	2.0	95.0	-1.6	89.6	3.9
Cymraeg – Welsh L6+	57.9	1.9	58.9	-1.0	57.4	0.5
Saesneg – English L5+	90.9	-0.5	91.5	-0.6	86.2	4.7
Saesneg - English L6+	57.4	-0.9	52.7	4.7	58.2	-0.8
Mathemateg - Maths L5+	92.2	1.1	92.0	0.2	86.1	6.1
Mathemateg - Maths L6+	64.9	1.1	57.9	7.0	59.9	5.0
Gwyddoniaeth - Science L5+	95.2	0.3	95.1	0.1	90.3	4.9
Gwyddoniaeth – Science L6+	65.4	2.7	64.2	1.1	62.2	3.2

Denbighshire

Cyfnod Allweddol 3 - Key Stage 3						
Dangosyddion Indicators	Perff 2016 Perf 2016	2015 -> 2016	Targed 2016 Target 2016	Perff v Tgd Perf v Tgt	Rhagamcan 2016 Latest Proj 2016	Perff v Rhag Perf v Proj
DPC - CSI	86.4	2.2	86.0	0.4	83.1	3.3
Cymraeg – Welsh L5+	92.5	0.0	93.9	-1.4	92.5	-0.1
Cymraeg – Welsh L6+	47.3	-10.9	66.5	-19.1	56.1	-8.8
Saesneg – English L5+	89.5	1.7	90.7	-1.2	85.8	3.7
Saesneg - English L6+	54.7	5.8	59.7	-5.0	48.9	5.8
Mathemateg - Maths L5+	90.9	1.2	90.3	0.6	88.4	2.5
Mathemateg - Maths L6+	62.5	2.5	64.8	-2.3	58.6	3.9
Gwyddoniaeth - Science L5+	93.1	0.0	93.1	0.0	89.4	3.8
Gwyddoniaeth – Science L6+	60.8	2.8	64.5	-3.8	50.4	10.3

Flintshire

Cyfnod Allweddol 3 – Key Stage 3						
Dangosyddion Indicators	Perff 2016 Perf 2016	2015 -> 2016	Targed 2016 Target 2016	Perff v Tgd Perf v Tgt	Rhagamcan 2016 Latest Proj 2016	Perff v Rhag Perf v Proj
DPC - CSI	88.4	1.3	89.3	-0.9	87.4	1.0
Cymraeg – Welsh L5+	96.8	16.8	92.1	4.8	92.1	4.8
Cymraeg – Welsh L6+	63.5	26.8	60.3	3.2	55.6	7.9
Saesneg – English L5+	91.1	-0.3	91.9	-0.8	90.4	0.7
Saesneg - English L6+	61.2	0.9	67.6	-6.4	60.3	0.9
Mathemateg - Maths L5+	92.7	0.7	92.6	0.0	90.8	1.9
Mathemateg - Maths L6+	67.1	1.3	71.0	-3.9	68.2	-1.2
Gwyddoniaeth - Science L5+	94.8	0.5	94.4	0.3	92.7	2.1
Gwyddoniaeth – Science L6+	64.6	2.3	70.7	-6.1	63.5	1.1

Wrexham

Cyfnod Allweddol 3 – Key Stage 3						
Dangosyddion Indicators	Perff 2016 Perf 2016	2015 -> 2016	Targed 2016 Target 2016	Perff v Tgd Perf v Tgt	Rhagamcan 2016 Latest Proj 2016	Perff v Rhag Perf v Proj
DPC - CSI	84.3	3.4	86.1	-1.8	81.5	2.8
Cymraeg – Welsh L5+	97.5	3.6	97.5	0.0	93.4	4.1
Cymraeg – Welsh L6+	79.0	17.3	68.6	10.4	59.5	19.5
Saesneg – English L5+	87.9	1.8	87.7	0.3	81.6	6.3
Saesneg - English L6+	49.3	3.9	54.0	-4.8	45.7	3.6
Mathemateg - Maths L5+	87.9	2.1	88.4	-0.4	83.6	4.3
Mathemateg - Maths L6+	56.3	2.2	61.4	-5.1	52.7	3.6
Gwyddoniaeth - Science L5+	91.9	1.3	92.0	-0.1	87.6	4.3
Gwyddoniaeth – Science L6+	58.8	7.6	62.5	-3.7	54.1	4.6

Table 22: Key Stage 3 - performance of FSM learners

DPC/CSI	2014			2015			2016		
	PYD FSM	Dim-PYD Non-FSM	Gwahan. Difference	PYD FSM	Dim-PYD Non-FSM	Gwahan. Difference	PYD FSM	Dim-PYD Non-FSM	Gwahan. Difference
GwE	65.2	87.4	-22.2	67.7	89.6	-21.9	73.3	90.5	-17.2
EAS									
ERW									
CSC									
Wales	61.3	85.6	-24.3	65.9	88.1	-22.2			

DPC/CSI	2014			2015			2016		
	PYD FSM	Dim-PYD Non-FSM	Gwahan. Difference	PYD FSM	Dim-PYD Non-FSM	Gwahan. Difference	PYD FSM	Dim-PYD Non-FSM	Gwahan. Difference
Anglesey	70.2	87.3	-17.1	71.3	87.5	-16.2	75.2	90.1	-14.8
Gwynedd	74.6	91.0	-16.3	78.3	93.4	-15.1	82.1	93.3	-11.2
Conwy	70.5	86.8	-16.3	70.1	90.1	-20.0	71.0	90.5	-19.5
Denbighshire	66.3	86.7	-20.4	63.2	88.6	-25.4	71.6	89.7	-18.1
Flintshire	65.1	87.7	-22.6	71.6	89.9	-18.3	76.2	90.9	-14.7
Wrexham	50.5	84.3	-33.9	56.0	86.4	-30.4	65.7	88.1	-22.3

Cymraeg L5+ Welsh L5+	2014			2015			2016		
	PYD FSM	Dim-PYD Non-FSM	Gwahan. Difference	PYD FSM	Dim-PYD Non-FSM	Gwahan. Difference	PYD FSM	Dim-PYD Non-FSM	Gwahan. Difference
GwE	76.1	91.4	-15.3	82.7	93.4	-10.7	83.2	93.9	-10.8
EAS									
ERW									
CSC									
Wales	75.6	91.5	-15.9	80.4	92.1	-11.6			

Cymraeg L5+ Welsh L5+	2014			2015			2016		
	PYD FSM	Dim-PYD Non-FSM	Gwahan. Difference	PYD FSM	Dim-PYD Non-FSM	Gwahan. Difference	PYD FSM	Dim-PYD Non-FSM	Gwahan. Difference
Anglesey	80.7	90.6	-9.9	82.0	95.0	-13.0	85.7	92.8	-7.1
Gwynedd	73.1	93.6	-20.5	80.5	94.6	-14.1	83.0	93.6	-10.6
Conwy	90.5	92.2	-1.7	90.9	91.5	-0.6	85.7	93.7	-8.0
Denbighshire	88.9	91.7	-2.8	90.0	92.6	-2.6	71.4	93.9	-22.4
Flintshire	11.1	62.1	-51.0	100.0	78.6	21.4	100.0	96.6	3.4
Wrexham	100.0	91.0	9.0	85.7	94.4	-8.7	81.8	99.1	-17.3

Cymraeg L6+ Welsh L6+	2014			2015			2016		
	PYD FSM	Dim-PYD Non-FSM	Gwahan. Difference	PYD FSM	Dim-PYD Non-FSM	Gwahan. Difference	PYD FSM	Dim-PYD Non-FSM	Gwahan. Difference
GwE	24.9	58.7	-33.8	33.7	62.5	-28.9	36.8	64.0	-27.2
EAS									
ERW									
CSC									
Wales	23.6	55.9	-32.3	34.4	58.5	-24.1			

Cymraeg L6+ Welsh L6+	2014			2015			2016		
	PYD FSM	Dim-PYD Non-FSM	Gwahan. Difference	PYD FSM	Dim-PYD Non-FSM	Gwahan. Difference	PYD FSM	Dim-PYD Non-FSM	Gwahan. Difference
Anglesey	26.3	58.9	-32.6	42.0	65.3	-23.3	42.9	69.0	-26.1
Gwynedd	22.1	60.0	-37.8	29.7	65.7	-36.1	37.5	64.0	-26.5
Conwy	42.9	65.6	-22.7	45.5	56.6	-11.1	28.6	58.9	-30.4
Denbighshire	33.3	53.7	-20.4	40.0	59.0	-19.0	7.1	50.0	-42.9
Flintshire	0.0	40.9	-40.9	16.7	38.1	-21.4	0.0	67.8	-67.8
Wrexham	22.2	55.9	-33.6	28.6	64.5	-35.9	63.6	80.6	-16.9

Saesneg L5+ English L5+	2014			2015			2016		
	PYD FSM	Dim-PYD Non-FSM	Gwahan. Difference	PYD FSM	Dim-PYD Non-FSM	Gwahan. Difference	PYD FSM	Dim-PYD Non-FSM	Gwahan. Difference
GwE	73.5	91.2	-17.8	74.5	92.4	-17.9	77.9	92.9	-15.0
EAS									
ERW									
CSC									
Wales	69.5	89.7	-20.2	73.3	91.3	-18.1			

Saesneg L5+ English L5+	2014			2015			2016		
	PYD FSM	Dim-PYD Non-FSM	Gwahan. Difference	PYD FSM	Dim-PYD Non-FSM	Gwahan. Difference	PYD FSM	Dim-PYD Non-FSM	Gwahan. Difference
Anglesey	77.2	91.0	-13.8	79.2	90.0	-10.8	78.1	93.0	-14.9
Gwynedd	81.0	91.9	-10.9	78.3	93.3	-15.0	79.9	94.1	-14.2
Conwy	78.1	91.0	-12.9	79.3	93.4	-14.1	78.4	93.4	-15.0
Denbighshire	72.1	91.8	-19.7	68.1	91.9	-23.7	78.6	92.0	-13.4
Flintshire	73.1	92.2	-19.1	80.2	93.5	-13.3	79.8	93.4	-13.5
Wrexham	63.6	89.0	-25.5	65.6	90.7	-25.2	72.6	91.1	-18.5

Saesneg L6+ English L6+	2014			2015			2016		
	PYD FSM	Dim-PYD Non-FSM	Gwahan. Difference	PYD FSM	Dim-PYD Non-FSM	Gwahan. Difference	PYD FSM	Dim-PYD Non-FSM	Gwahan. Difference
GwE	29.2	54.7	-25.5	28.7	59.3	-30.5	35.9	61.8	-25.9
EAS									
ERW									
CSC									
Wales	25.0	53.8	-28.9	29.4	57.9	-28.5			

Saesneg L6+ English L6+	2014			2015			2016		
	PYD FSM	Dim-PYD Non-FSM	Gwahan. Difference	PYD FSM	Dim-PYD Non-FSM	Gwahan. Difference	PYD FSM	Dim-PYD Non-FSM	Gwahan. Difference
Anglesey	26.3	53.0	-26.7	40.6	59.2	-18.6	39.0	60.3	-21.2
Gwynedd	30.3	55.8	-25.6	37.3	60.5	-23.2	44.8	68.2	-23.4
Conwy	41.4	57.3	-15.9	35.4	62.0	-26.7	30.9	62.2	-31.4
Denbighshire	30.5	52.7	-22.2	19.1	55.1	-36.0	35.8	59.2	-23.4
Flintshire	29.7	58.8	-29.0	31.1	65.3	-34.3	40.4	64.9	-24.5
Wrexham	16.4	48.4	-32.0	18.2	51.1	-32.9	26.3	53.6	-27.3

Maths L5+	2014			2015			2016		
	PYD FSM	Dim-PYD Non-FSM	Gwahan. Difference	PYD FSM	Dim-PYD Non-FSM	Gwahan. Difference	PYD FSM	Dim-PYD Non-FSM	Gwahan. Difference
GwE	73.6	91.5	-17.9	75.1	93.2	-18.1	79.9	93.8	-13.9
EAS									
ERW									
CSC									
Wales	70.7	90.2	-19.4	74.3	92.1	-17.8			

Maths L5+	2014			2015			2016		
	PYD FSM	Dim-PYD Non-FSM	Gwahan. Difference	PYD FSM	Dim-PYD Non-FSM	Gwahan. Difference	PYD FSM	Dim-PYD Non-FSM	Gwahan. Difference
Anglesey	72.8	90.8	-18.0	78.2	91.1	-12.9	80.0	93.0	-13.0
Gwynedd	81.0	93.3	-12.3	82.0	95.2	-13.2	85.8	95.1	-9.3
Conwy	77.6	91.8	-14.2	75.6	93.7	-18.1	79.0	94.8	-15.8
Denbighshire	77.4	91.2	-13.8	73.0	93.2	-20.2	78.6	93.7	-15.1
Flintshire	72.2	91.8	-19.6	81.5	94.0	-12.5	83.9	94.6	-10.7
Wrexham	63.1	89.2	-26.1	63.2	90.8	-27.6	72.6	91.1	-18.5

Maths L6+	2014			2015			2016		
	PYD FSM	Dim-PYD Non-FSM	Gwahan. Difference	PYD FSM	Dim-PYD Non-FSM	Gwahan. Difference	PYD FSM	Dim-PYD Non-FSM	Gwahan. Difference
GwE	33.7	64.3	-30.5	36.2	66.9	-30.7	41.4	68.6	-27.2
EAS									
ERW									
CSC									
Wales	31.2	61.8	-30.6	35.0	65.1	-30.1			

Maths L6+	2014			2015			2016		
	PYD FSM	Dim-PYD Non-FSM	Gwahan. Difference	PYD FSM	Dim-PYD Non-FSM	Gwahan. Difference	PYD FSM	Dim-PYD Non-FSM	Gwahan. Difference
Anglesey	29.8	65.3	-35.5	44.6	62.0	-17.4	39.0	68.1	-29.0
Gwynedd	36.6	68.6	-32.0	43.5	70.9	-27.4	41.0	74.7	-33.7
Conwy	44.3	64.9	-20.6	37.2	68.6	-31.4	39.5	69.7	-30.2
Denbighshire	41.1	62.5	-21.4	33.8	65.6	-31.8	43.8	66.7	-23.0
Flintshire	31.1	65.7	-34.6	38.7	70.4	-31.7	48.0	70.6	-22.6
Wrexham	19.6	58.2	-38.6	25.4	60.2	-34.8	33.7	60.6	-26.9

Gwyddon L5+ Science L5+	2014			2015			2016		
	PYD FSM	Dim-PYD Non-FSM	Gwahan. Difference	PYD FSM	Dim-PYD Non-FSM	Gwahan. Difference	PYD FSM	Dim-PYD Non-FSM	Gwahan. Difference
GwE	82.3	94.3	-11.9	82.6	95.8	-13.3	84.9	96.0	-11.1
EAS	77.9	93.4	-15.5	80.6	94.5	-13.9			
ERW									
CSC									
Wales									

Gwyddon L5+ Science L5+	2014			2015			2016		
	PYD FSM	Dim-PYD Non-FSM	Gwahan. Difference	PYD FSM	Dim-PYD Non-FSM	Gwahan. Difference	PYD FSM	Dim-PYD Non-FSM	Gwahan. Difference
Anglesey	82.5	94.0	-11.6	85.1	94.4	-9.2	84.8	96.0	-11.3
Gwynedd	84.5	95.2	-10.6	87.6	97.2	-9.6	87.3	97.1	-9.8
Conwy	88.1	95.3	-7.2	84.1	96.8	-12.7	87.7	96.7	-9.0
Denbighshire	84.2	95.5	-11.3	83.3	95.2	-11.9	84.1	95.1	-11.1
Flintshire	80.7	93.5	-12.8	85.6	95.9	-10.3	85.7	96.6	-11.0
Wrexham	75.2	92.4	-17.2	72.2	94.7	-22.5	80.6	94.2	-13.7

Gwyddon L6+ Science L6+	2014			2015			2016		
	PYD FSM	Dim-PYD Non-FSM	Gwahan. Difference	PYD FSM	Dim-PYD Non-FSM	Gwahan. Difference	PYD FSM	Dim-PYD Non-FSM	Gwahan. Difference
GwE	34.7	61.7	-27.0	34.6	65.1	-30.5	41.5	68.0	-26.5
EAS									
ERW									
CSC									
Wales	29.7	60.2	-30.5	34.3	64.1	-29.8			

Gwyddon L6+ Science L6+	2014			2015			2016		
	PYD FSM	Dim-PYD Non-FSM	Gwahan. Difference	PYD FSM	Dim-PYD Non-FSM	Gwahan. Difference	PYD FSM	Dim-PYD Non-FSM	Gwahan. Difference
Anglesey	35.1	58.6	-23.5	44.6	58.9	-14.3	43.8	65.5	-21.7
Gwynedd	38.0	67.9	-29.9	43.5	72.5	-29.0	45.5	74.0	-28.5
Conwy	45.7	64.2	-18.5	36.0	67.6	-31.6	42.0	69.8	-27.8
Denbighshire	34.2	54.0	-19.8	32.4	63.5	-31.1	41.8	65.0	-23.2
Flintshire	36.3	66.5	-30.2	35.1	67.0	-31.8	44.4	68.2	-23.9
Wrexham	20.1	54.5	-34.5	23.4	57.1	-33.7	32.6	63.8	-31.2

Table 23: Key Stage 3 – difference between the genders

DPC/CSI	2014			2015			2016		
	Bechgyn Boys	Merched Girls	Gwahan. Difference	Bechgyn Boys	Merched Girls	Gwahan. Difference	Bechgyn Boys	Merched Girls	Gwahan. Difference
GwE	79.2	88.5	-9.3	82.0	90.2	-8.3	84.5	91.2	-6.8
EAS	74.0	84.4	-10.4	78.3	86.3	-8.0	79.8	88.0	-8.2
ERW	78.4	84.4	-6.0	80.7	88.2	-7.5	82.0	89.4	-7.4
CSC	76.0	84.7	-8.7	80.5	86.8	-6.3	83.2	90.5	-7.3
Wales	76.8	85.5	-8.7	80.3	87.7	-7.4	82.3	89.7	-7.4

DPC/CSI	2014			2015			2016		
	Bechgyn Boys	Merched Girls	Gwahan. Difference	Bechgyn Boys	Merched Girls	Gwahan. Difference	Bechgyn Boys	Merched Girls	Gwahan. Difference
Anglesey	77.7	89.6	-11.9	76.1	92.8	-16.6	82.2	93.2	-11.0
Gwynedd	84.8	93.5	-8.7	89.7	93.0	-3.3	90.1	94.0	-3.9
Conwy	81.0	86.7	-5.8	83.4	90.9	-7.5	84.5	90.3	-5.8
Denbighshire	78.5	87.9	-9.5	79.9	88.9	-9.0	83.1	90.3	-7.2
Flintshire	80.4	88.3	-7.9	83.3	91.0	-7.7	85.6	91.3	-5.7
Wrexham	71.9	85.2	-13.2	76.0	85.9	-9.9	79.9	88.8	-9.0

Cymraeg L5+ Welsh L5+	2014			2015			2016		
	Bechgyn Boys	Merched Girls	Gwahan. Difference	Bechgyn Boys	Merched Girls	Gwahan. Difference	Bechgyn Boys	Merched Girls	Gwahan. Difference
GwE	84.7	95.0	-10.3	89.8	94.7	-4.9	90.1	95.6	-5.5
EAS	84.2	93.0	-8.8	85.9	90.3	-4.4	82.0	91.7	-9.7
ERW	85.9	93.0	-7.1	84.5	93.6	-9.1	89.2	94.5	-5.3
CSC	87.8	94.0	-6.2	88.2	95.9	-7.7	89.5	95.9	-6.4
Wales	85.7	94.4	-8.7	87.3	94.3	-7.0	89.1	94.9	-5.8

Cymraeg L5+ Welsh L5+	2014			2015			2016		
	Bechgyn Boys	Merched Girls	Gwahan. Difference	Bechgyn Boys	Merched Girls	Gwahan. Difference	Bechgyn Boys	Merched Girls	Gwahan. Difference
Anglesey	83.7	94.4	-10.7	90.9	95.4	-4.5	88.4	95.9	-7.5
Gwynedd	87.5	95.7	-8.1	90.7	95.4	-4.7	90.0	94.7	-4.7
Conwy	89.2	94.4	-5.2	87.4	95.5	-8.1	88.8	98.1	-9.3
Denbighshire	85.8	97.3	-11.5	90.2	94.4	-4.2	91.0	93.9	-2.9
Flintshire	42.9	72.7	-29.9	74.2	83.1	-8.9	95.2	97.6	-2.4
Wrexham	83.1	100.0	-16.9	89.8	97.0	-7.2	96.4	98.4	-2.0

Cymraeg L6+ Welsh L6+	2014			2015			2016		
	Bechgyn Boys	Merched Girls	Gwahan. Difference	Bechgyn Boys	Merched Girls	Gwahan. Difference	Bechgyn Boys	Merched Girls	Gwahan. Difference
GwE	44.5	65.8	-21.3	50.7	68.2	-17.5	51.4	71.1	-19.7
EAS	36.1	64.8	-28.7	42.3	60.6	-18.3	42.7	58.8	-16.1
ERW	40.0	64.8	-24.8	40.7	62.1	-21.4	40.3	61.7	-21.4
CSC	44.7	62.3	-17.6	45.9	70.7	-24.8	56.2	70.4	-14.2
Wales	42.3	63.4	-21.1	45.6	66.0	-20.4	47.8	66.5	-18.7

Cymraeg L6+ Welsh L6+	2014			2015			2016		
	Bechgyn Boys	Merched Girls	Gwahan. Difference	Bechgyn Boys	Merched Girls	Gwahan. Difference	Bechgyn Boys	Merched Girls	Gwahan. Difference
Anglesey	44.8	63.3	-18.4	52.6	71.7	-19.1	55.8	77.4	-21.6
Gwynedd	44.3	68.1	-23.7	52.6	70.8	-18.3	49.2	72.5	-23.3
Conwy	53.8	71.3	-17.5	48.6	63.4	-14.7	54.2	61.7	-7.5
Denbighshire	40.7	65.2	-24.5	48.2	66.2	-18.0	39.6	54.8	-15.1
Flintshire	33.3	39.4	-6.1	35.5	37.3	-1.8	71.4	59.5	11.9
Wrexham	45.8	60.7	-14.9	42.9	75.8	-32.9	64.3	92.1	-27.8

Saesneg L5+ English L5+	2014			2015			2016		
	Bechgyn Boys	Merched Girls	Gwahan. Difference	Bechgyn Boys	Merched Girls	Gwahan. Difference	Bechgyn Boys	Merched Girls	Gwahan. Difference
GwE	83.2	93.7	-10.5	85.2	94.0	-8.8	86.7	94.3	-7.6
EAS	79.5	90.0	-10.5	82.1	91.1	-9.0	83.0	92.2	-9.2
	82.0	90.0	-8.0	84.4	92.7	-8.3	85.3	93.5	-8.2
CSC	79.8	90.9	-11.1	84.1	91.5	-7.4	86.5	93.8	-7.3
Wales	80.9	91.2	-10.3	83.9	92.1	-8.2	85.3	93.3	-8.0

Saesneg L5+ English L5+	2014			2015			2016		
	Bechgyn Boys	Merched Girls	Gwahan. Difference	Bechgyn Boys	Merched Girls	Gwahan. Difference	Bechgyn Boys	Merched Girls	Gwahan. Difference
Anglesey	82.2	93.8	-11.7	80.4	95.2	-14.8	84.6	96.6	-12.0
Gwynedd	86.1	95.1	-8.9	88.3	94.5	-6.2	89.2	95.8	-6.6
Conwy	85.3	92.5	-7.2	87.6	95.1	-7.5	88.5	93.3	-4.8
Denbighshire	83.7	93.3	-9.7	84.0	91.8	-7.8	86.4	93.2	-6.8
Flintshire	84.1	94.8	-10.6	87.3	95.5	-8.2	87.2	95.0	-7.8
Wrexham	77.1	92.4	-15.3	80.4	91.8	-11.4	83.4	92.6	-9.2

Saesneg L6+ English L6+	2014			2015			2016		
	Bechgyn Boys	Merched Girls	Gwahan. Difference	Bechgyn Boys	Merched Girls	Gwahan. Difference	Bechgyn Boys	Merched Girls	Gwahan. Difference
GwE	40.7	60.9	-20.2	44.8	64.4	-19.6	48.6	67.4	-18.8
EAS	36.7	55.6	-18.9	48.3	60.4	-12.1	44.1	61.9	-17.8
ERW	41.3	55.6	-14.3	52.9	60.3	-7.4	46.7	65.1	-18.4
CSC	41.3	57.1	-15.8	51.4	62.9	-11.5	49.2	67.9	-18.7
Wales	40.1	57.4	-17.3	51.4	61.8	-10.4	47.2	65.6	-18.4

Saesneg L6+ English L6+	2014			2015			2016		
	Bechgyn Boys	Merched Girls	Gwahan. Difference	Bechgyn Boys	Merched Girls	Gwahan. Difference	Bechgyn Boys	Merched Girls	Gwahan. Difference
Anglesey	38.2	57.5	-19.3	44.3	67.3	-22.9	45.1	68.8	-23.7
Gwynedd	40.2	65.8	-25.7	46.6	68.8	-22.2	54.4	76.4	-22.1
Conwy	44.6	64.8	-20.2	49.3	67.2	-17.9	49.2	65.8	-16.7
Denbighshire	40.2	57.5	-17.3	39.3	58.8	-19.6	45.1	66.2	-21.1
Flintshire	44.2	65.5	-21.3	50.7	69.8	-19.1	53.2	69.2	-16.1
Wrexham	34.6	51.3	-16.7	36.5	54.0	-17.5	41.3	57.3	-15.9

Maths L5+	2014			2015			2016		
	Bechgyn Boys	Merched Girls	Gwahan. Difference	Bechgyn Boys	Merched Girls	Gwahan. Difference	Bechgyn Boys	Merched Girls	Gwahan. Difference
GwE	86.3	90.8	-4.4	88.3	92.4	-4.1	90.0	93.2	-3.2
EAS	82.1	87.6	-5.5	85.2	88.9	-3.7	87.1	90.9	-3.8
ERW	85.3	87.6	-2.3	87.1	90.5	-3.4	87.3	91.9	-4.6
CSC	84.3	88.0	-3.7	87.5	90.0	-2.5	88.8	92.4	-3.6
Wales	84.5	88.6	-4.1	87.0	90.4	-3.4	88.2	92.1	-3.9

Maths L5+	2014			2015			2016		
	Bechgyn Boys	Merched Girls	Gwahan. Difference	Bechgyn Boys	Merched Girls	Gwahan. Difference	Bechgyn Boys	Merched Girls	Gwahan. Difference
Anglesey	83.1	91.2	-8.1	83.5	94.3	-10.8	88.1	93.5	-5.4
Gwynedd	89.2	94.6	-5.4	93.1	93.7	-0.6	93.5	94.6	-1.0
Conwy	88.2	90.1	-2.0	89.0	93.2	-4.2	91.3	93.1	-1.8
Denbighshire	86.5	91.0	-4.5	87.9	91.6	-3.7	89.8	92.3	-2.5
Flintshire	86.8	90.6	-3.8	90.1	93.9	-3.8	91.7	93.6	-2.0
Wrexham	82.4	87.1	-4.7	83.3	88.4	-5.1	84.1	91.8	-7.8

Maths L6+	2014			2015			2016		
	Bechgyn Boys	Merched Girls	Gwahan. Difference	Bechgyn Boys	Merched Girls	Gwahan. Difference	Bechgyn Boys	Merched Girls	Gwahan. Difference
GwE	56.6	62.2	-5.6	59.6	64.7	-5.1	61.6	67.3	-5.8
EAS	49.9	54.2	-4.3	54.2	59.8	-5.6	57.6	62.8	-5.2
ERW	55.5	54.2	1.3	57.9	61.3	-3.4	59.9	64.6	-4.7
CSC	53.0	58.3	-5.3	57.6	61.7	-4.1	61.7	66.5	-4.8
Wales	53.7	58.7	-5.0	57.3	61.8	-4.5	60.3	65.3	-5.0

Maths L6+	2014			2015			2016		
	Bechgyn Boys	Merched Girls	Gwahan. Difference	Bechgyn Boys	Merched Girls	Gwahan. Difference	Bechgyn Boys	Merched Girls	Gwahan. Difference
Anglesey	54.5	62.3	-7.9	50.5	67.3	-16.8	56.7	70.4	-13.7
Gwynedd	60.3	69.6	-9.3	62.9	72.0	-9.1	67.7	73.6	-5.9
Conwy	61.0	60.7	0.3	60.5	67.2	-6.7	63.6	66.2	-2.6
Denbighshire	56.6	60.9	-4.3	59.4	60.7	-1.3	59.8	65.8	-6.0
Flintshire	58.5	63.3	-4.9	65.2	66.4	-1.3	64.6	69.5	-4.9
Wrexham	47.3	55.7	-8.3	52.8	55.5	-2.7	53.9	58.7	-4.7

Gwyddon L5+ Science L5+	2014			2015			2016		
	Bechgyn Boys	Merched Girls	Gwahan. Difference	Bechgyn Boys	Merched Girls	Gwahan. Difference	Bechgyn Boys	Merched Girls	Gwahan. Difference
GwE	89.3	95.1	-5.8	91.5	95.9	-4.3	92.4	96.1	-3.7
EAS	86.7	92.9	-6.2	88.9	93.3	-4.4	89.2	93.9	-4.7
ERW	88.1	92.9	-4.8	89.2	93.7	-4.5	90.3	94.8	-4.5
CSC	87.6	92.5	-4.9	89.3	94.0	-4.7	91.1	95.8	-4.7
Wales	87.8	93.1	-5.3	89.6	94.1	-4.5	90.7	95.1	-4.4

Gwyddon L5+ Science L5+	2014			2015			2016		
	Bechgyn Boys	Merched Girls	Gwahan. Difference	Bechgyn Boys	Merched Girls	Gwahan. Difference	Bechgyn Boys	Merched Girls	Gwahan. Difference
Anglesey	86.9	95.8	-8.8	88.4	96.7	-8.3	91.1	97.2	-6.1
Gwynedd	90.7	97.1	-6.3	95.8	96.0	-0.2	95.0	97.0	-2.0
Conwy	92.3	95.3	-3.0	92.3	97.6	-5.2	94.3	96.2	-1.9
Denbighshire	90.8	96.2	-5.4	90.8	95.5	-4.7	91.4	95.2	-3.8
Flintshire	88.6	94.1	-5.5	92.1	96.5	-4.4	93.0	96.5	-3.5
Wrexham	85.6	92.9	-7.3	88.0	93.2	-5.3	89.0	94.9	-5.9

Gwyddon L6+ Science L6+	2014			2015			2016		
	Bechgyn Boys	Merched Girls	Gwahan. Difference	Bechgyn Boys	Merched Girls	Gwahan. Difference	Bechgyn Boys	Merched Girls	Gwahan. Difference
GwE	52.2	62.5	-10.3	55.3	65.3	-10.0	58.9	69.0	-10.2
EAS	43.9	56.2	-12.3	49.1	60.1	-11.0	54.8	64.9	-10.1
ERW	49.5	56.2	-6.7	52.5	61.6	-9.1	56.7	66.8	-10.1
CSC	52.0	62.4	-10.4	56.4	67.6	-11.2	59.6	72.8	-13.2
Wales	49.6	59.9	-10.3	53.6	63.8	-10.2	57.5	68.6	-11.0

Gwyddon L6+ Science L6+	2014			2015			2016		
	Bechgyn Boys	Merched Girls	Gwahan. Difference	Bechgyn Boys	Merched Girls	Gwahan. Difference	Bechgyn Boys	Merched Girls	Gwahan. Difference
Anglesey	46.2	61.7	-15.5	50.5	61.9	-11.4	56.4	67.9	-11.5
Gwynedd	58.6	70.3	-11.7	63.1	74.6	-11.5	65.8	75.4	-9.6
Conwy	54.7	67.1	-12.4	58.9	66.5	-7.6	59.0	71.9	-13.0
Denbighshire	48.5	52.6	-4.1	51.4	64.8	-13.4	56.2	66.2	-9.9
Flintshire	57.1	67.1	-9.9	59.4	65.2	-5.8	61.8	67.4	-5.6
Wrexham	43.2	53.9	-10.7	44.8	57.6	-12.8	52.0	65.6	-13.6

KEY STAGE 4

Main messages [based on initial data that has not been verified - September 2016]

- The progress in the percentage of pupils achieving the Level 2 Inclusive Threshold [L2+] is higher this year [+2.6%] compared to the progress seen in 2015 [0.4%].
- In 2016, each of the 6 authorities has made progress in the L2+, with the greatest progress seen in Gwynedd and Denbighshire [Anglesey: 2.0%; Gwynedd 5.3%; Conwy 1.3%; Denbighshire 4.4%; Flintshire 0.7% and Wrexham 2.8%].
- Progress was seen in the region's performance in the Core Subject Indicator [+2.9%], Welsh First Language [+0.6%], English [+0.8%] and maths [+3.2%]; performance has remained consistent in L1; performance has fallen slightly in the Level 2 Threshold [-1.1%] and in science [-1.4%].
- There has been strong progress in the percentage of pupils successfully achieving grades A*-C in English in Anglesey [+4.0%], Gwynedd [+2.0%] and Denbighshire [3.2%]. However, only slight progress was seen in Conwy [+0.1%], with a fall in Wrexham [-0.8%] and Flintshire [-1.0%].
- There has been progress in the percentage of pupils successfully achieving grades A*-C in maths in each of the 6 authorities. However, progress varies significantly between the authorities [Anglesey: 2.4%; Gwynedd 5.9%; Conwy 1.0%; Denbighshire 5.1%; Flintshire 0.4% and Wrexham 5.2%].
- It seems that the percentage of pupils successfully achieving 5A*-A has fallen further this year [it needs to be verified that all schools have included GCSE equivalent subject in the shared figures].
- The region's performance for L2+ is below target [-1.9%] and below the final projections [-3.5%]. Final projections for English [-2.1%] and maths [-2.4%] are also below target but closer to true performance than what was seen for L2+.
- In 2016, around a third of all schools are within 1% to their final projections for the L2+; around two thirds have achieved their projection or are within 5%; and only 6 schools (11%) where performance is 10% below the projection.
- For the Capped Points Score, full information on the 2016 performance is not available at the moment. There is no comprehensive information available either for the performance of FSM learners or the difference between the performances of the genders.
- When comprehensive data is available, further consideration should be given to the above performances in the context of any national progress.

Aspects that require attention

- Develop and implement strategies to improve standards in local authorities that are performing significantly lower than their comparative FSM ranking and their expected benchmark in the Level 2 Inclusive Threshold [L2+]
- Target schools that are underperforming in the key indicators (L2+, L2, L1, CSI, Capped Points Score, Wider Points Score, Core Subjects) and intervene robustly to improve performance
- Develop and implement strategies to improve standards in Welsh, English, maths and science across the region
- Ensure specialist Challenge Adviser support across the region for each core subject
- Target schools to improve performance in English Language and Welsh language following changes to the L2+ [since Literature no longer contributes to the language element]
- Implement an effective secondary school to school programme for the core subjects at KS4 by arranging local networks for Heads of Department
- Improve the performance of FSM learners in the main indicators and close any significant gaps between the performances of FSM and non-FSM learners
- Improve performance on the higher levels to raise the 5A*-A %
- Ensure that individual local authorities' improvement plans specifically address the underperformance of boys or girls
- Ensure that more robust action is taken to verify the appropriateness of targets and progress towards them
- Take action to ensure that leaders on all levels make effective and timely use of tracking systems to plan effective intervention and address underperformance/comfortable performance [particularly in the context of data read-across]
- Target action in secondary schools where there are concerns regarding performance and/or the quality of leadership
- Ensure agreed understanding with leaders of the requirements with regard to planning for the curriculum/provision in order to improve performance against the main indicators.
- Ensure that leaders plan confidently for the revised indicators in Languages, maths and science
- Continue to work with LA officers to improve the quality of leadership on all levels and to reduce the risk of the school being placed in a statutory follow-up category following an Estyn inspection

- Promote better School to School collaboration in order to ensure that best practice is cascaded and nurtured
- Build on the success of the Co-leading Schools to support GCSE delivery in the Core Subjects across the region
- Use lead practitioners to facilitate a range of professional networks in order to share good practice in the non-core subjects
- Develop a guidance and toolkit to improve the quality of teaching and learning in the core subjects

KEY STAGE 4
[Data not verified –September 2016]

Table 24: Key Stage 4 - Level 2 Inclusive Threshold

Performance against Welsh Government benchmarks [modelled on expected performance based on FSM eligibility]

TL2+ / L2+	2014			2015			2016		
	Gwir Actual	Meincnod Benchmark	Gwahan. Difference	Gwir Actual	Meincnod Benchmark	Gwahan. Difference	Gwir Actual	Meincnod Benchmark	Gwahan. Difference
Anglesey	53.75	55.46	-1.71	56.89	58.37	-1.47	58.9	-	-
Gwynedd	61.10	61.43	-0.33	63.28	63.92	-0.64	68.5	-	-
Conwy	55.46	55.64	-0.17	54.18	59.74	-5.56	55.5	-	-
Denbighshire	55.64	54.04	1.59	56.07	56.75	-0.67	60.5	-	-
Flintshire	61.87	61.10	0.77	60.61	62.70	-2.09	61.2	-	-
Wrexham	50.98	55.79	-4.81	52.07	60.61	-8.53	54.9	-	-

TL2+ / L2+	2014		2015		2016		Cynnydd / Progress	
	%	S/R	%	S/R	%	S/R	15->16	14->16
GwE	57.1	2	57.5	3	60.1	-	2.6	3.0
EAS	52.2	4	55.1	4	-	-	-	-
ERW	57.9	1	61.0	1	-	-	-	-
CSC	54.1	3	58.5	2	-	-	-	-
Wales	55.4		57.9		-		-	-

TL2+ / L2+	2014		2015		2016		Cynnydd / Progress	
	%	S/R	%	S/R	%	S/R	15->16	14->16
Anglesey (10)	53.8	14	56.9	12	58.9	-	2.0	5.1
Gwynedd (4)	61.1	5	63.3	5	68.6	-	5.3	7.5
Conwy (8)	55.5	11	54.2	18	55.5	-	1.3	0.0
Denbighshire (14)	55.6	10	56.1	14	60.5	-	4.4	4.9
Flintshire (6)	61.9	3	60.6	8	61.3	-	0.7	-0.6
Wrexham (9)	51.0	18	52.1	20	54.9	-	2.8	3.9
GwE (1)	57.1	2	57.5	3	60.1	-	2.6	3.0
Wales	55.4		57.9		-		-	-

Table 25: Key Stage 4 – Level 2 Threshold

TL2 / L2	2014		2015		2016		Cynnydd / Progress	
	%	S/R	%	S/R	%	S/R	15->16	14->16
GwE	83.9	2	82.7	3	81.6	-	-1.1	-2.3
EAS	79.6	4	82.4	4	-	-	-	-
ERW	86.0	1	88.2	1	-	-	-	-
CSC	81.1	3	85.0	2	-	-	-	-
Wales	82.3		84.1		-		-	-

TL2 / L2	2014		2015		2016		Cynnydd / Progress	
	%	S/R	%	S/R	%	S/R	15->16	14->16
Anglesey (10)	85.6	9	83.1	16	81.6	-	-1.5	-4.0
Gwynedd (4)	87.7	4	88.9	6	88.6	-	-0.3	0.9
Conwy (8)	85.8	8	83.6	14	81.2	-	-2.4	-4.6
Denbighshire (14)	88.8	2	86.0	10	86.3	-	0.3	-2.5
Flintshire (6)	82.7	15	83.2	15	80.8	-	-2.4	-1.9
Wrexham (9)	73.9	21	71.9	22	72.4	-	0.5	-1.5
GwE (1)	83.9	2	82.7	3	81.6	-	-1.1	-2.3
Wales	82.3		84.1		-		-	-

Table 26: Key Stage 4 - Level 1 Threshold

TL1 / L1	2014		2015		2016		Cynnydd / Progress	
	%	S/R	%	S/R	%	S/R	15->16	14->16
GwE	95.1	2	95.2	3	95.2	-	0.0	0.1
EAS	93.7	3	95.5	2	-	-	-	-
ERW	95.9	1	96.3	1	-	-	-	-
CSC	93.5	4	94.5	4	-	-	-	-
Wales	94.0		94.4		-		-	-

TL1 / L1	2014		2015		2016		Cynnydd / Progress	
	%	S/R	%	S/R	%	S/R	15->16	14->16
Anglesey (10)	96.0	6	96.3	8	95.9	-	-0.4	-0.1
Gwynedd (4)	97.2	1	97.9	1	98.7	-	0.8	1.5
Conwy (8)	95.6	8	95.6	14	94.0	-	-1.6	-1.6
Denbighshire (14)	95.2	11	94.9	17	95.8	-	1.0	0.6
Flintshire (6)	94.1	14	94.5	18	95.3	-	0.8	1.2
Wrexham (9)	93.1	21	92.8	20	92.3	-	-0.5	-0.8
GwE (1)	95.1	2	95.2	3	95.2	-	0.0	0.1
Wales	94.0		94.4		-		-	-

Table 27: Key Stage 4 - CSI

DPC - CSI	2014		2015		2016		Cynnydd / Progress	
	%	S/R	%	S/R	%	S/R	15->16	14->16
GwE	54.8	2	54.8	3	57.7	-	2.9	2.9
EAS	50.0	4	51.7	4	-	-	-	-
ERW	55.1	1	57.9	1	-	-	-	-
CSC	52.2	3	56.6	2	-	-	-	-
Wales	52.6		54.8		-		-	-

DPC - CSI	2014		2015		2016		Cynnydd / Progress	
	%	S/R	%	S/R	%	S/R	15->16	14->16
Anglesey (10)	52.5	13	54.4	12	56.6	-	2.2	4.1
Gwynedd (4)	60.5	2	62.4	3	67.1	-	4.7	6.6
Conwy (8)	52.7	12	50.8	17	52.6	-	1.8	-0.1
Denbighshire (14)	54.0	10	51.9	15	57.8	-	5.9	3.8
Flintshire (6)	58.3	5	58.7	7	58.4	-	-0.3	0.1
Wrexham (9)	47.8	20	48.7	21	53.2	-	4.5	5.4
GwE (1)	54.8	2	54.8	3	57.7	-	2.9	2.9
Wales	52.6		54.8		-		-	-

Table 28: Key Stage 4 – Capped Points Score (CPS)

SPC - CPS	2014		2015		2016		Cynnydd / Progress	
	%	S/R	%	S/R	%	S/R	15->16	14->16
GwE	346.93	2	343.77	3	-	-	-	-
EAS	333.75	4	339.31	4	-	-	-	-
ERW	350.89	1	355.13	1	-	-	-	-
CSC	336.54	3	344.17	2	-	-	-	-
Wales	340.80		343.49		-		-	-

SPC - CPS	2014		2015		2016		Cynnydd / Progress	
	%	S/R	%	S/R	%	S/R	15->16	14->16
Anglesey (10)	357.20	3	351.07	9	-	-	-	-
Gwynedd (4)	362.20	1	361.99	1	-	-	-	-
Conwy (8)	345.96	11	339.44	17	-	-	-	-
Denbighshire (14)	351.83	5	345.44	11	-	-	-	-
Flintshire (6)	341.48	13	342.09	15	-	-	-	-
Wrexham (9)	329.28	20	326.02	21	-	-	-	-
GwE (1)	346.93	2	343.77	3	-	-	-	-
Wales	340.80		343.49		-		-	-

Table 29: Key Stage 4 - 5A*-A (higher grades)

5A*-A	2014		2015		2016		Cynnydd / Progress	
	%	S/R	%	S/R	%	S/R	15->16	14->16
GwE	16.6	3	15.2	3	14.3	-	-0.9	-2.3
EAS	15.8	4	14.4	4	-	-	-	-
ERW	16.7	2	17.1	1	-	-	-	-
CSC	17.5	1	16.8	2	-	-	-	-
Wales	17.3		16.6		-		-	-

5A*-A	2014		2015		2016		Cynnydd / Progress	
	%	S/R	%	S/R	%	S/R	15->16	14->16
Anglesey (10)	16.8	10	14.2	13	16.4	-	2.2	-0.4
Gwynedd (4)	22.9	2	20.3	3	18.7	-	-1.6	-4.2
Conwy (8)	17.6	8	14.0	16	13.5	-	-0.5	-4.1
Denbighshire (14)	17.3	9	17.4	8	13.0	-	-4.4	-4.3
Flintshire (6)	13.7	19	14.1	15	14.5	-	0.4	0.8
Wrexham (9)	12.1	20	10.8	20	10.4	-	-0.4	-1.7
GwE (1)	16.6	10	14.2	13	16.4	-	2.18	-0.4
Wales	17.3		16.6		-		-	-

Table 30: Key Stage 4 - Welsh

Cymraeg Welsh	2014		2015		2016		Cynnydd / Progress	
	%	S/R	%	S/R	%	S/R	15->16	14->16
GwE	72.7	4	75.6	3	76.2	-	0.6	3.5
EAS	76.1	1	66.2	4	-	-	-	-
ERW	73.3	3	75.8	2	-	-	-	-
CSC	75.5	2	76.7	1	-	-	-	-
Wales	73.7		75.2		-		-	-

Cymraeg Welsh	2014		2015		2016		Cynnydd / Progress	
	%	S/R	%	S/R	%	S/R	15->16	14->16
Anglesey (10)	71.6	12/18	71.6	16/18	77.5	-	5.9	5.9
Gwynedd (4)	73.3	9/18	78.8	4/18	76.2	-	-2.6	2.9
Conwy (8)	79.1	5/18	72.3	13/18	79.0	-	6.7	-0.1
Denbighshire (14)	73.0	10/18	72.4	12/18	73.2	-	0.8	0.2
Flintshire (6)	59.7	18/18	72.0	14/18	69.3	-	-2.7	9.6
Wrexham (9)	69.0	15/18	76.7	8/18	76.7	-	0	7.7
GwE (1)	72.7	4	75.6	3	76.2	-	0.6	3.5
Wales	73.7		75.2		-		-	-

Table 31: Key Stage 4 – English

Saesneg English	2014		2015		2016		Cynnydd / Progress	
	%	S/R	%	S/R	%	S/R	15->16	14->16
GwE	67.5	2	68.2	3	69.0	-	0.8	1.5
EAS	64.8	4	65.8	4	-	-	-	-
ERW	67.7	1	71.3	1	-	-	-	-
CSC	65.2	3	70.2	2	-	-	-	-
Wales	66.2		68.6		-		-	-

Saesneg English	2014		2015		2016		Cynnydd / Progress	
	%	S/R	%	S/R	%	S/R	15->16	14->16
Anglesey (10)	65.2	15	63.8	19	67.8	-	4.0	2.6
Gwynedd (4)	69.2	7	72.3	6	74.3	-	2.0	5.1
Conwy (8)	65.6	14	65.8	16	65.9	-	0.1	0.3
Denbighshire (14)	66.6	10	66.9	13	70.1	-	3.2	3.5
Flintshire (6)	73.3	2	72.2	7	71.2	-	-1.0	-2.1
Wrexham (9)	61.8	18	64.8	18	64.0	-	-0.8	2.2
GwE (1)	67.5	2	68.2	3	69.0	-	0.8	1.5
Wales	66.2		68.6		-		-	-

Table 32: Key Stage 4 – Maths

Maths	2014		2015		2016		Cynnydd / Progress	
	%	S/R	%	S/R	%	S/R	15->16	14->16
GwE	63.4	2	64.3	2	67.5	-	3.2	4.1
EAS	57.8	4	62.2	4	-	-	-	-
ERW	64.4	1	67.4	1	-	-	-	-
CSC	60.2	3	63.6	3	-	-	-	-
Wales	61.7		64.4		-		-	-

Maths	2014		2015		2016		Cynnydd / Progress	
	%	S/R	%	S/R	%	S/R	15->16	14->16
Anglesey (10)	60.2	13	64.5	11	66.9	-	2.4	6.7
Gwynedd (4)	65.2	7	67.0	8	72.9	-	5.9	7.7
Conwy (8)	63.0	10	62.5	15	63.5	-	1.0	0.5
Denbighshire (14)	62.8	11	63.6	13	68.7	-	5.1	5.9
Flintshire (6)	68.4	2	69.4	5	69.8	-	0.4	1.4
Wrexham (9)	57.3	17	57.1	21	62.3	-	5.2	5.0
GwE (1)	63.4	2	64.3	2	67.5	-	3.2	4.1
Wales	61.7		64.4		-		-	-

Table 33: Key Stage 4 – Science

Gwyddoniaeth Science	2014		2015		2016		Cynnydd / Progress	
	%	S/R	%	S/R	%	S/R	15->16	14->16
GwE	86.0	1	85.2	3	83.8	-	-1.4	-2.2
EAS	82.5	3	84.7	4	-	-	-	-
ERW	81.5	4	85.5	=1	-	-	-	-
CSC	83.4	2	85.5	=1	-	-	-	-
Wales	82.3		84.0		-		-	-

Gwyddoniaeth Science	2014		2015		2016		Cynnydd / Progress	
	%	S/R	%	S/R	%	S/R	15->16	14->16
Anglesey (10)	88.2	4	91.8	2	86.5	-	-5.3	-1.7
Gwynedd (4)	93.8	1	94.2	1	93.0	-	-1.2	-0.8
Conwy (8)	85.1	9	84.3	15	75.3	-	-9.0	-9.8
Denbighshire (14)	88.2	5	81.5	19	82.4	-	0.9	-5.8
Flintshire (6)	84.0	11	85.8	12	84.0	-	-1.8	0.0
Wrexham (9)	77.9	19	76.1	21	82.4	-	6.3	4.5
GwE (1)	86.0	1	85.2	3	83.8	-	-1.4	-2.2
Wales	82.3		84.0		-		-	-

Table 34: Key Stage 4 – Performance against final projections

Cyfnod Allweddol 4 – Key Stage 4						
Dangosyddion Indicators	Gwir 2016 Actual 2016	+/- 2015>2016	Targed 2016 Target 2016	+/- Gwir v Targed +/- Actual v Target	Rhagamcan Projection	+/- Gwir v Rhag. +/- Actual v Project.
TL2+ / L2+	60.1	2.6	62.0	-1.9	63.6	-3.5
Cymraeg – Welsh	76.2	0.6	80.9	-4.7	77.8	-1.6
Saesneg – English	69.0	0.8	73.1	-4.1	71.1	-2.1
Mathemateg - Maths	67.5	3.2	71.6	-4.1	69.9	-2.4

Gwir Berfformiad v Rhagamcanion Terfynol – Actual Performance v Final Projections						
	O fewn 1% i'r rhagamcan Within 1% of projection		Cyflawni rhagamcan neu o fewn 5% Projection achieved or within 5%		Perfformiad >10% o dan rhagamcan Performance >10% under projection	
	Rhif / No	%	Rhif / No	%	Rhif / No	%
TL2+ / L2+	17	31%	36	65%	6	11%

KEY STAGE 5

The model of delivery for Key Stage 5 varies within authorities and across the region. Provision is delivered by either individual schools, 6th form colleges, further education colleges or schools (and colleges) collaborating within the consortium.

As a result, it is difficult to come to a meaningful conclusion on Key Stage 5 performance in schools within the region. Nonetheless, the data below collected from schools suggests that schools' performance on the higher grades (A*-A) is an aspect that requires improvement. A detailed analysis will need to be completed following the publication of the Core Data Set and scrutiny of performance in specific subjects in the schools.

Table 35: Key Stage 5 – A Level

Lefel A A Level	Entries	A*-A		A*-C		A*-E	
		#	%	#	%	#	%
GwE	4,565	833	18.2	3,319	72.7	4,443	97.3
EAS	4879	1158	23.7		Not reported	4750	97.4
ERW	5,523	1,215	22.0	4,192	75.9	5,389	97.6
CSC	7,951	1,758	22.1	5,978	75.2	7,783	97.9
Wales			22.7		73.8		97.3

Lefel A A Level	2015						2016					
	A*-A		A*-C		A*-E		A*-A		A*-C		A*-E	
	#	%	#	%	#	%	#	%	#	%	#	%
Anglesey	101	17.0	424	71.4	575	96.8	108	19.8	392	71.9	528	96.9
Gwynedd	235	24.9	725	77.0	918	97.5	171	20.2	590	69.6	816	96.2
Conwy	198	19.5	734	72.2	986	97.0	200	19.2	775	74.2	1020	97.7
Denbighshire	154	17.9	629	73.1	838	97.3	174	18.6	707	75.6	916	98.0
Flintshire	180	19.1	727	77.3	917	97.6	135	14.7	672	73.0	894	97.2
Wrexham	40	19.0	151	71.6	209	99.1	45	16.5	183	67.0	269	98.5
GwE	908	19.9	3390	74.3	4443	97.3	833	18.2	3319	72.7	4443	97.3
Wales		23.1		74.3		97.3		22.7		73.8		97.3